

SHELBY, MONTANA

AL-5372 (FAA)

23250

WAAS CH 78026 W23A	APP CRS 230°	Rwy Idg 5005 TDZE 3443 Apt Elev 3443
--	------------------------	---

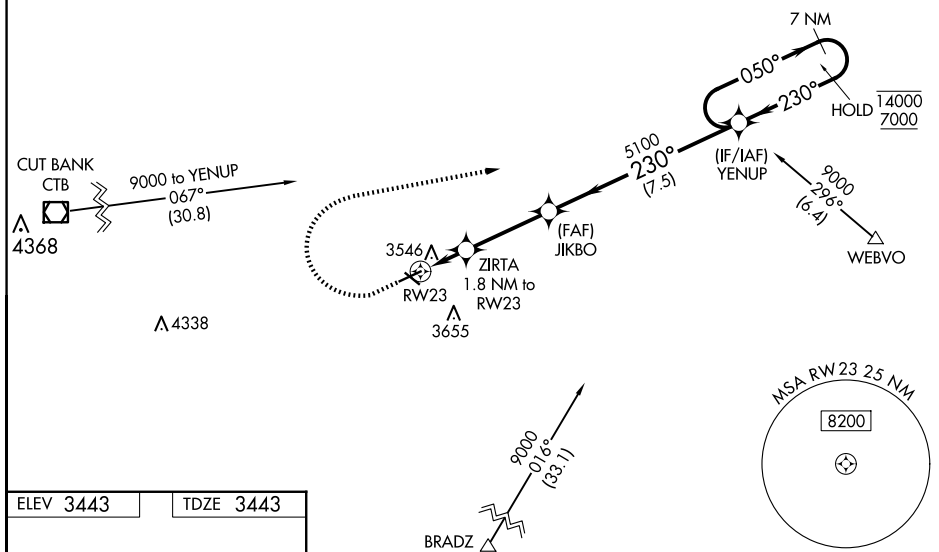
RNAV (GPS) RWY 23
SHELBY (SBX)

RNP APCH - GPS.

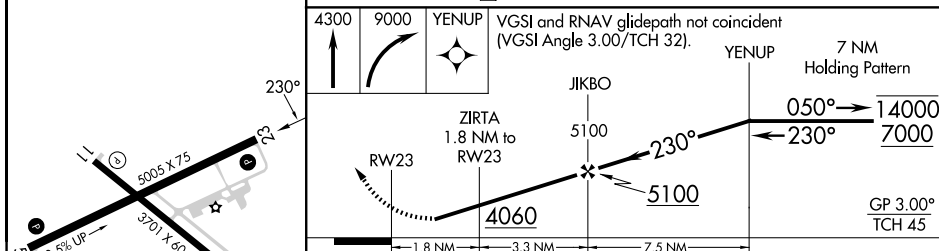
T Rwy 23 helicopter visibility reduction below $\frac{3}{4}$ SM NA. Baro-VNAV NA
A when using Cut Bank altimeter setting. For uncompensated Baro-VNAV
systems, LNAV/VNAV NA below -21°C or above 54°C. When local
altimeter setting not received, use Cut Bank altimeter setting.


MISSED APPROACH: Climb to 4300 then climbing right turn to 9000 direct YENUP and hold, continue climb-in-hold to 9000.

AWOS-3PT 128.325	SALT LAKE CITY CENTER 133.4 285.4	UNICOM 122.8 (CTAF) 0
----------------------------	---	---------------------------------



ELEV 3443		TDZE 3443
-----------	--	-----------



CATEGORY		A	B	C	D
LPV	DA	3799-1		356 (400-1)	
INAV/ VNAV	DA	3813-1		370 (400-1)	
INAV	MDA	3920-1 477 (500-1)		3920-1 $\frac{3}{8}$ 477 (500-1 $\frac{3}{8}$)	
 CIRCLING		4020-1 577 (600-1)	4080-1 637 (700-1)	4100-1 $\frac{3}{4}$ 657 (700-1 $\frac{3}{4}$)	4220-2 $\frac{1}{2}$ 777 (800-2 $\frac{1}{2}$)

SHELBY, MONTANA

Amdt 2C 07SEP23

SHELBY (SBX)

48°32'N-111°52'W

RNAV (GPS) RWY 23

NW-1, 07 AUG 2025 to 04 SEP 2025

NW-1, 07 AUG 2025 to 04 SEP 2025