


WAAS CH 93699 W18A	APP CRS 185°	Rwy Idg 6503 TDZE 866 Apt Elev 866
--	------------------------	---

RNAV (GPS) RWY 18
METTEL FLD (CEV)

RNP APCH.

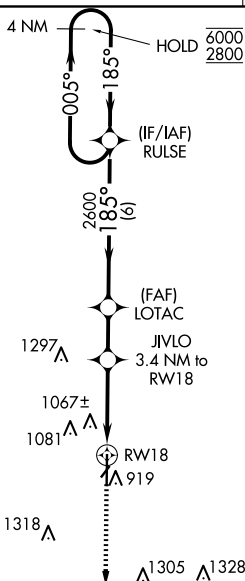
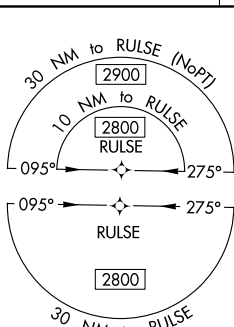
	<p>For uncompensated Baro-VNAV systems, LNAV/VNAV NA below -16°C or above 54°C. VDP and Baro-VNAV NA when using James M. Cox Dayton Intl altimeter setting. Circling Rwy 4, 22 NA at night. For inop ALts increase LPV all Cats visibility to 1 SM, LNAV/VNAV all Cats visibility to 1/2 SM, and LNAV Cats A/B visibility to 1 SM. For inop ALts when using James M. Cox Dayton Intl altimeter setting, increase LPV all Cats visibility to 1 SM, LNAV/VNAV all Cats visibility to 1/2 SM. When local altimeter setting not received, use James M. Cox Dayton Intl altimeter setting and increase all DA 121 feet and all MDA 140 feet: increase LPV and LNAV/VNAV all Cats and LNAV Cat C/D visibility 1/2 SM, and Circling Cat C/D visibility 1/2 SM.</p>
---	---

MALSR

MISSED APPROACH:
Climb to 2800 direct
WALAG and hold.

AWOS-3
118.325

COLUMBUS APP CON
134.45 352.05

UNICOM
122.8 (CTAF) 

A1582

Δ 1475

MISSED APCH FIX



EC-2, 07 AUG 2025 to 04 SEP 2025

[illegible]