

LOC I-SQK <u>108.35</u>	APP CRS 185°	Rwy Idg TDZE Apt Elev	6503 866 866
-----------------------------------	------------------------	-----------------------------	---

ILS or LOC RWY 18
METTEL FLD. (CEV)

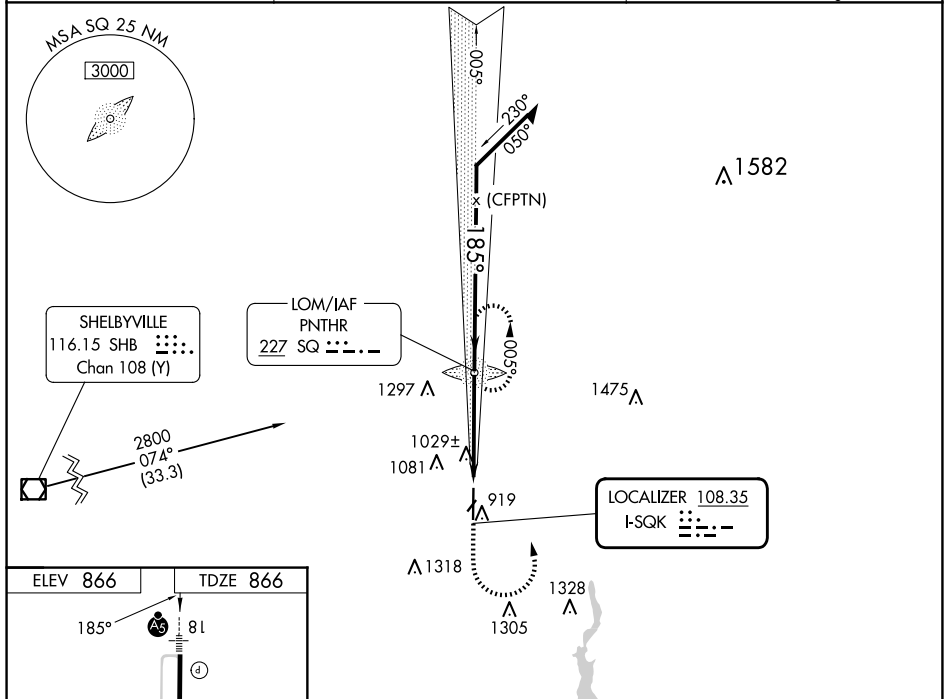
ADF required.

NA Circling NA to Rwy's 4 and 22. For inop MALS/R, increase S-LOC 18 Cats C/D visibility to 1 ½ mile. When local altimeter setting not received, use James M Cox Dayton Intl altimeter setting and increase ILS DA to 1237 feet and visibility all Cats to ½ mile, increase all MDA 140 feet and LOC Cats C/D visibility to 1 ½ mile, and Circling Cat BDA visibility to 1 ¼ miles and Cat C to 2 ¾ miles and Cat D to 3 miles. When using James M Cox Dayton Intl altimeter setting: for inop MALS/R, increase S-ILS 18 all Cats visibility to 1 mile and increase S-LOC 18 Cat A/B visibility to 1 mile and Cat C/D to 1 ½ mile.

MALSR
A5

MISSED APPROACH:
Climb to 2800 then
left turn direct SQ LOM
and hold.

AWOS-3 118.325	COLUMBUS APP CON 134.45 352.05	UNICOM 122.8 (CTAF) 0
--------------------------	--	---------------------------------



MIRL Rwy 18-36
REIL Rwy 36

FAF to MAP 4.2 NM

	Knots	60	90	120	150	180
Min:Sec	4:12	2:48	2:06	1:41	1:24	

CATEGORY	A	B	C	D
S-ILS 18	1116-1/2 250 (300-1/2)			
S-LOC 18	1280-1/2 414 (500-1/2)	1280-3/4 414 (500-3/4)		

	1440-1 574 (600-1)	1540-1 674 (700-1)	1620-2 1/4 754 (800-2 1/4)	1620-2 1/2 754 (800-2 1/2)
CIRCLING				