

WAAS
CH **78113**
W23A

APP CRS
227°

Rwy Idg
TDZE
Apt Elev

6002
1201
1201

AL-5369 (FAA)

RNAV (GPS) RWY 23

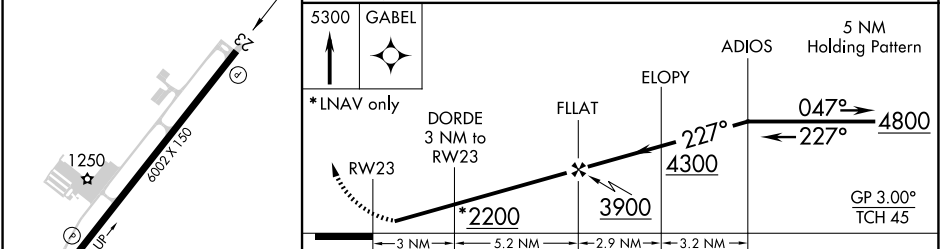
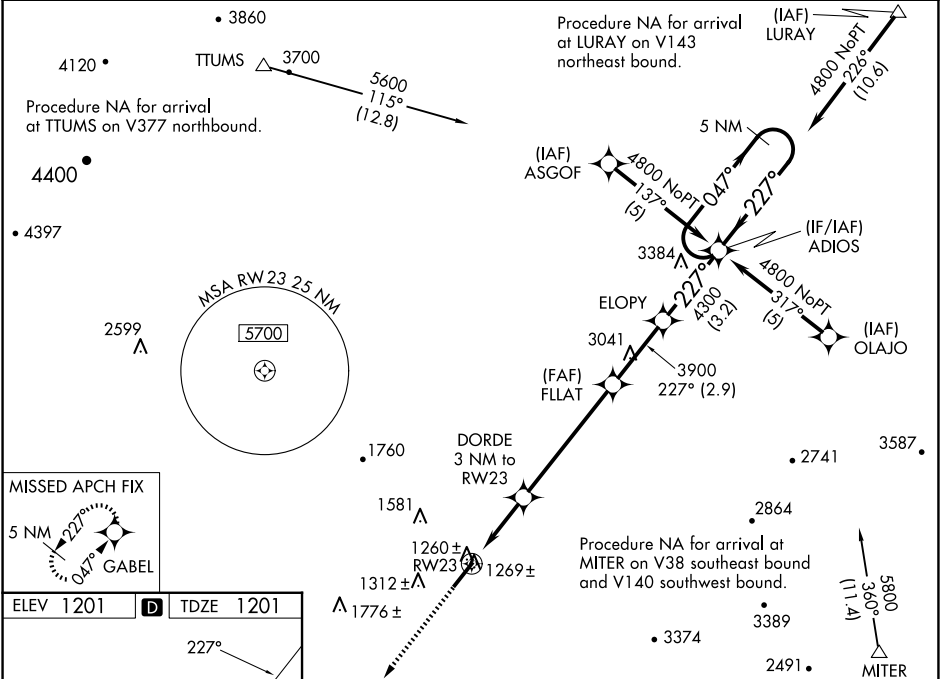
SHENANDOAH VALLEY RGNL (SHD)

RNP APCH - GPS.

Baro-VNAV NA when using Charlottesville altimeter setting. For uncompensated Baro-VNAV systems, LNAV/VNAV NA below -17°C or above 54°C. Visibility reduction by helicopters NA. When local altimeter setting not received, use Charlottesville altimeter setting and increase all DA 130 feet and all MDA 140 feet. Increase LPV and LNAV/VNAV all Cats visibility ¼ SM, LNAV Cat C visibility ¼ SM, LNAV Cat D ½ SM, Circling Cat C ½ SM and Cat D ¼ SM.

MISSED APPROACH:
Climb to 5300 direct GABEL and hold, continue climb-in-hold to 5300.

AWOS-3 124.925	POTOMAC APP CON 132.85 323.125	CLNC DEL 118.35	UNICOM 123.0 (CTAF) 0
--------------------------	--	---------------------------	---------------------------------



CATEGORY	A	B	C	D
LPV DA	1451-¾ 250 (300-¾)			
LNAV/VNAV DA	1530-1 329 (400-1)			
LNAV MDA	1580-1 379 (400-1)			
CIRCLING	1660-1 459 (500-1)	1760-1 559 (600-1)	1900-2 699 (700-2)	2060-2¾ 859 (900-2¾)