

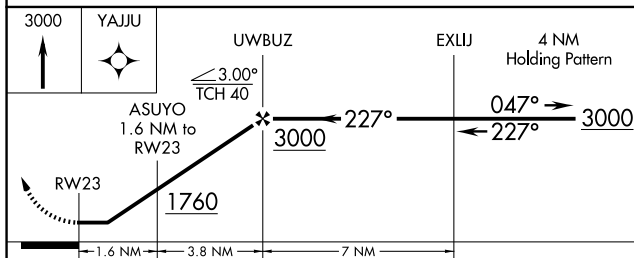
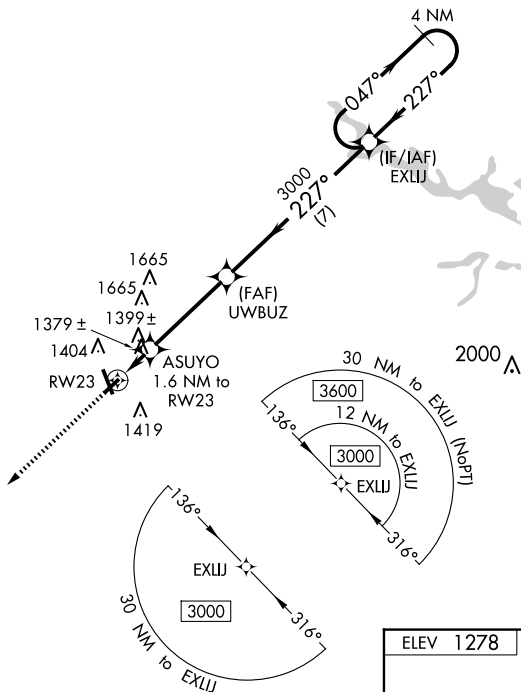
WAAS CH 70732 W23A	APP CRS 227°	Rwy Idg 3600 TDZE 1258 Apt Elev 1278
--	------------------------	---


RNAV (GPS) RWY 23
MARSHFIELD MUNI (MFI)

T DME/DME RNP-0.3 NA. Helicopter visibility reduction below $\frac{3}{4}$ SM NA. When local altimeter setting not received, use Central Wisconsin altimeter setting and increase all MDA 60 feet, increase LP and LNAV visibility Cat C/D $\frac{1}{4}$ mile.

MISSED APPROACH:
Climb to 3000 direct
YAJJU and hold.

ASOS 121.575	MINNEAPOLIS CENTER 124.4 317.7	UNICOM 123.0 (CTAF) 0
------------------------	--	---------------------------------



CATEGORY	A	B	C	D
LP MDA	1640-1	382 (400-1)	1640-1 $\frac{1}{8}$	382 (400-1 $\frac{1}{8}$)
LNAV MDA	1660-1	402 (400-1)	1660-1 $\frac{1}{8}$	402 (400-1 $\frac{1}{8}$)
 CIRCLING	1760-1	482 (500-1)	2020-2 $\frac{1}{4}$ 742 (800-2 $\frac{1}{4}$)	2020-2 $\frac{1}{2}$ 742 (800-2 $\frac{1}{2}$)

