

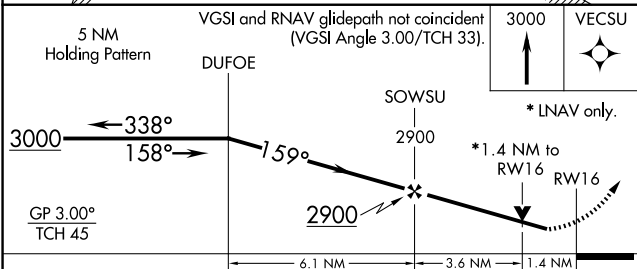
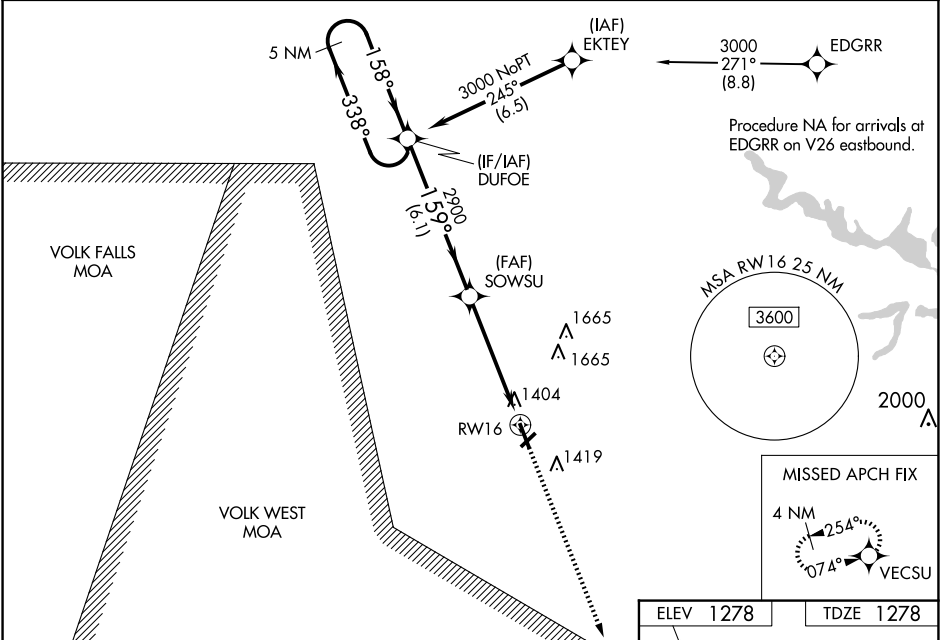
WAAS CH 99501 W16A	APP CRS 159°	Rwy Idg 5003 TDZE 1278 Apt Elev 1278
--	------------------------	---

RNAV (GPS) RWY 16
MARSHFIELD MUNI (MFI)

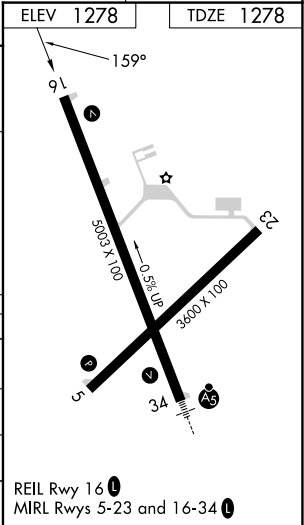
⚠ For uncompensated Baro-VNAV systems, LNAV/VNAV NA below -21°C (-5°F) or above 54°C (130°F). Baro-VNAV and VDP NA when using Central Wisconsin altimeter setting. DME/DME RNP-0.3 NA. Rwy 16 helicopter visibility reduction below ¾ SM NA. When local altimeter setting not received, use Central Wisconsin altimeter setting and increase all DA 56 feet and all visibility ⅛ SM, increase all MDA 60 feet and LNAV Cat C/D visibility ¼ SM.

MISSED APPROACH:
Climb to 3000 direct
VECSU and hold.

ASOS 121.575	MINNEAPOLIS CENTER 124.4 317.7	UNICOM 123.0 (CTAF) 0
------------------------	--	---------------------------------



CATEGORY	A	B	C	D
LPV DA	1639-1¼	361 (400-1¼)		
LNAV/VNAV DA	1682-1¾	404 (500-1¾)		
LNAV MDA	1760-1	482 (500-1)	1760-1¾	482 (500-1¾)
CIRCLING	1760-1	482 (500-1)	2020-2¼ 742 (800-2¼)	2020-2½ 742 (800-2½)



EC-3, 07 AUG 2025 to 04 SEP 2025

EC-3, 07 AUG 2025 to 04 SEP 2025