

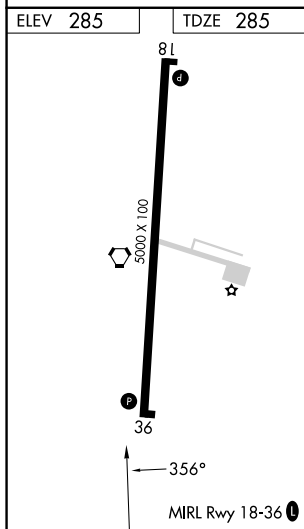
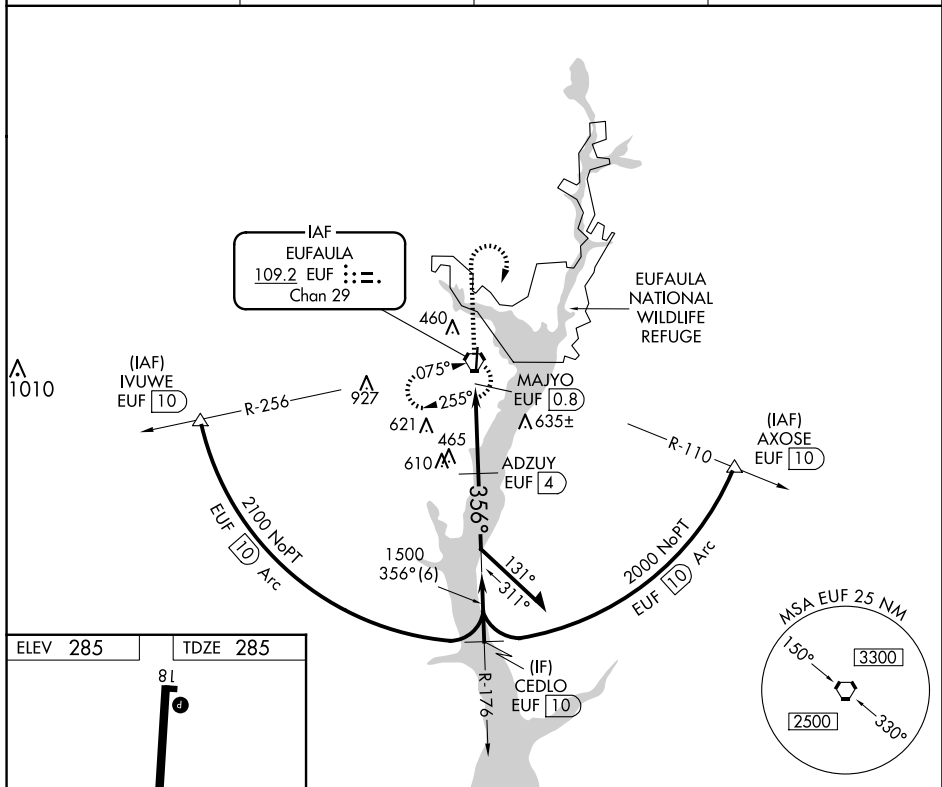
VORTAC EUF 109.2 Chan 29	APP CRS 356°	Rwy Idg 5000 TDZE 285 Apt Elev 285
--	------------------------	---


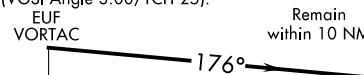
VOR/DME RWY 36
WEEDON FLD (EUF)

T When local altimeter setting not received, use Columbus, GA altimeter setting and increase all MDAs 40 feet and S-36 visibility Cots C and D $\frac{1}{8}$ SM and Circling Cots C and D $\frac{1}{4}$ SM. Rwy 36 helicopter visibility reduction below $\frac{3}{4}$ SM NA.

MISSED APPROACH: Climb to 1500 then climbing right turn to 2000 direct EUF VORTAC and hold.

ASOS 128.325	ATLANTA APP CON ★ 125.5 323.1	CLNC DEL 134.25 339.8	UNICOM 122.8 (CTAF) 0
------------------------	---	---------------------------------	---------------------------------



1500 ↑	2000 ↗	EUF 	VGSI and descent angles not coincident (VGSI Angle 3.00/TCH 25). EUF VORTAC				Remain within 10 NM	
								
CATEGORY	A		B		C		D	
S-36	780-1 495 (500-1)				780-1 ³ / ₈ 495 (500-1 ³ / ₈)			
CIRCLING	920-1 635 (700-1)				1060-2 ¹ / ₄ 775 (800-2 ¹ / ₄)		1060-2 ¹ / ₂ 775 (800-2 ¹ / ₂)	