

VORTAC EUF	APP CRS	Rwy Idg	<b>5000</b>
<b>109.2</b>	<b>187°</b>	TDZE	<b>285</b>
Chan <b>29</b>		Apt Elev	<b>285</b>

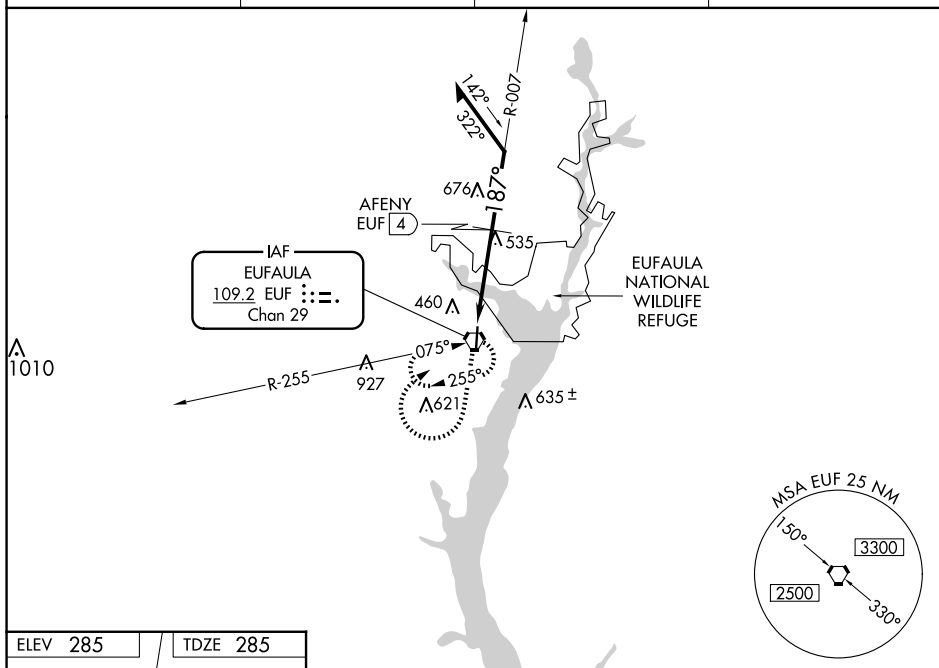
VOR RWY 18  
WEEDON FLD (EUF)

**T**  
**A** NA

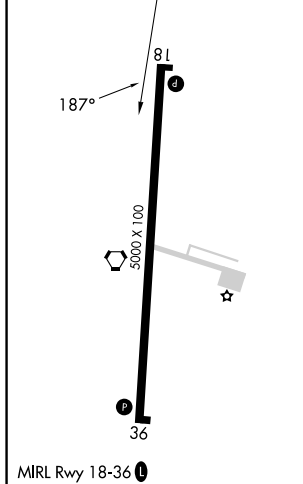
When local altimeter setting not received, use Columbus, GA altimeter setting and increase all MDAs 40 feet and S-18 visibility Cats C and D  $\frac{1}{2}$  SM and Circling Cats C and D  $\frac{1}{4}$  SM. Increase AFENY fix minimums S-18 visibility Cats C and D  $\frac{1}{8}$  SM and Circling visibility Cats C and D  $\frac{1}{4}$  SM.

**MISSED APPROACH:** Climb to 1500 then climbing right turn to 2000 direct EUF VORTAC and hold.

ASOS <b>128.325</b>	ATLANTA APP CON ★ <b>125.5 323.1</b>	CLNC DEL <b>134.25 339.8</b>	UNICOM <b>122.8</b> (CTAF) <b>0</b>
------------------------	---	---------------------------------	--



ELEV 285	TDZE 285
----------	----------



\*1080 when using Columbus, GA altimeter setting.