

WAAS CH 78032 W18A	APP CRS 181°	Rwy Idg 4098 TDZE 573 Apt Elev 573
--	------------------------	---

RNAV (GPS) RWY 18

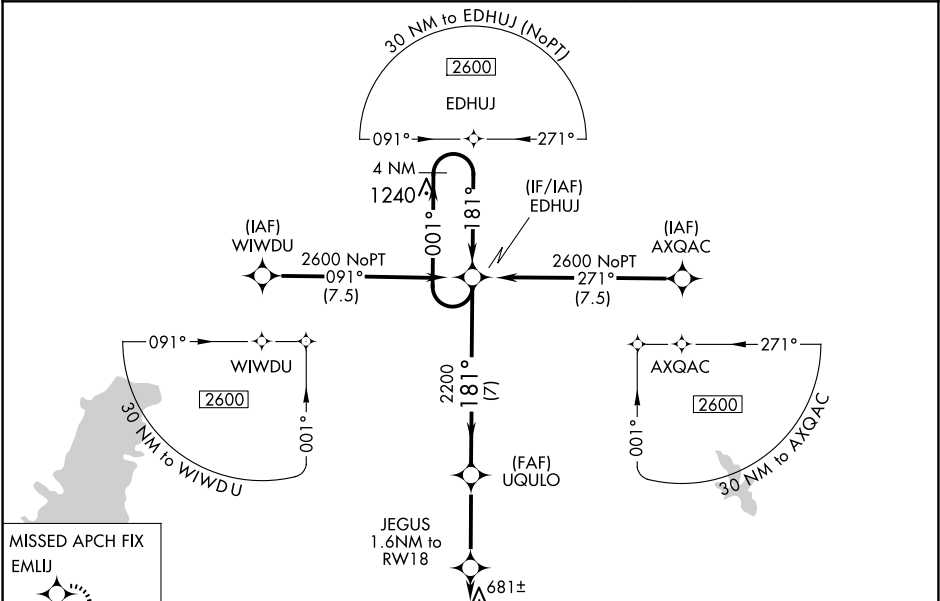
SALEM-LECKRONE (SLO)

⚠

Baro-VNAV NA when using Centralia altimeter setting. For uncompensated Baro-VNAV systems, LNAV/VNAV NA below -21°C (-5°F) or above 54°C (130°F). When local altimeter setting not received, use Centralia altimeter setting: increase LPV DA to 801 feet; increase LNAV/VNAV DA to 890 feet and visibility 1/8 SM; increase all MDAs 40 feet and LNAV Cats C/D visibility 1/8 SM and Circling Cats C/D visibility 1/4 SM. DME/DME RNP-0.3 NA.

MISSED APPROACH: Climb to 2600 direct EMLJ and hold.

AWOS-3PT 118.525	KANSAS CITY CENTER 127.7 351.825	UNICOM 122.725 (CTAF) 0
----------------------------	--	--



ELEV 573		TDZE 573	
2600		181°	
EMLJ		4098 x 75	
*LNAV Only		36	
RW18 to RW18		REIL Rwy 18-36 0	
JEGUS to RW18		MIRL Rwy 18-36 0	
UQULO			
EDHUJ			
RW18			
2600			
2200			
1120			
1.5 NM			
0.1 NM			
3.4 NM			
7 NM			
CATEGORY	A	B	C
LPV DA	773-1	200 (200-1)	
LNAV/VNAV DA	862-1	289 (300-1)	
LNAV MDA	940-1	367 (400-1)	
CIRCLING	1040-1	467 (500-1)	1380-2 1/4 807 (900-2 1/4)
			1380-2 1/2 807 (900-2 1/2)