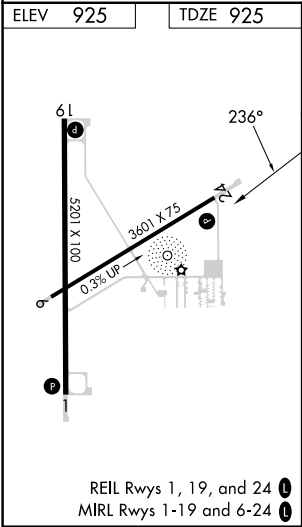
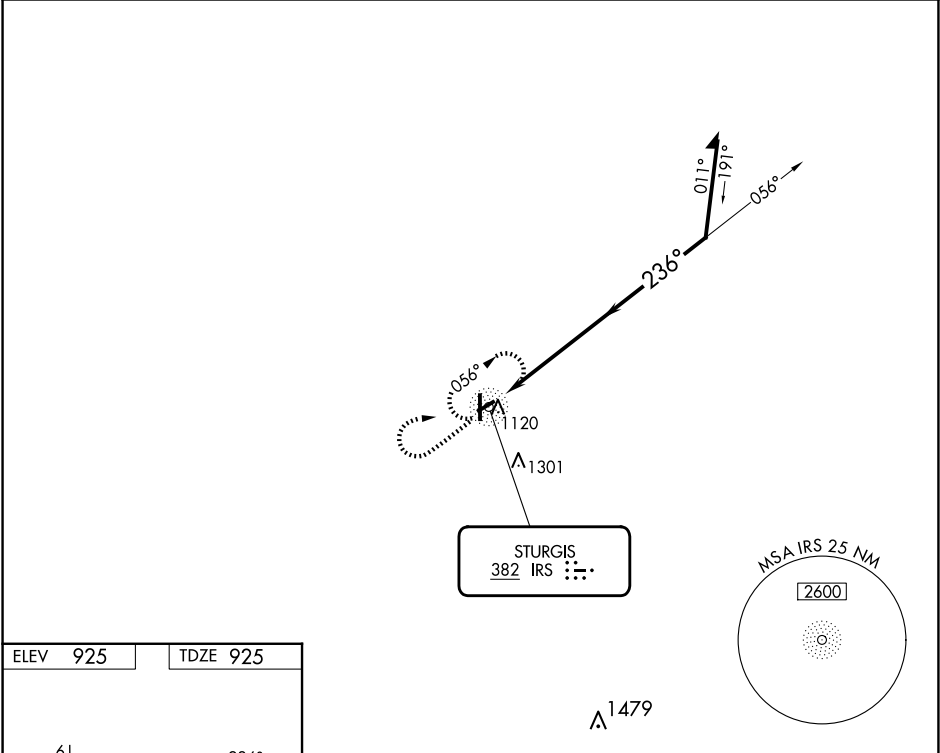


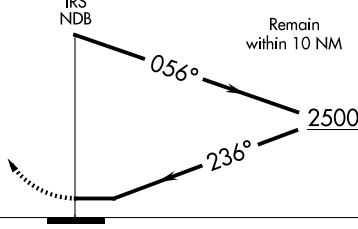



NDB IRS	APP CRS	Rwy Idg	3601
382	236°	TDZE	925
		Apt Elev	925

NDB RWY 24  
KIRSCH MUNI (IRS)

RADAR required for procedure entry.		MISSED APPROACH: Climb to 2500 then right turn direct IRS NDB and hold.	
Circling Rwy 6 NA at night. Rwy 24 helicopter visibility reduction below ¾ SM NA.			
AWOS-3 121.325	GREAT LAKES APP CON ★ 121.2 239.25	CLNC DEL 118.325	UNICOM 123.05 (CTAF) 0



<div>2500</div> <div></div>		<div>IRS</div> <div></div>	VGSI and descent angles not coincident (VGSI Angle 4.00/TCH 22).	
		<div>IRS NDB</div> <div></div> <div>Remain within 10 NM</div> <div><u>2500</u></div>		
CATEGORY	A	B	C	D
S-24	1500-1	575 (600-1)	1500-1½	575 (600-1½)
 CIRCLING	1500-1	575 (600-1)	1620-2 695 (700-2)	1620-2¼ 695 (700-2¼)