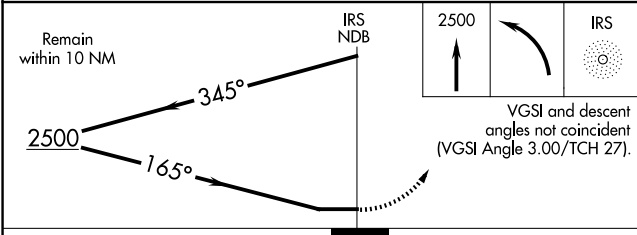
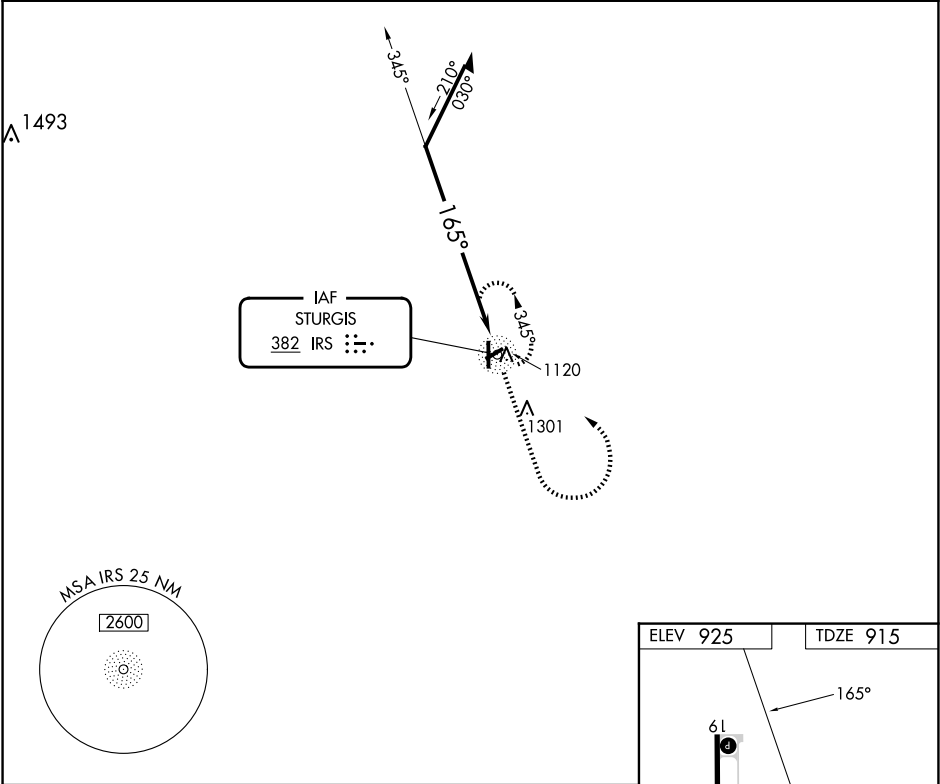


NDB IRS	APP CRS	Rwy Idg	5201
382	165°	TDZE	915
		Apt Elev	925

NDB RWY 19
KIRSCH MUNI (IRS)

RADAR required for procedure entry.	MISSED APPROACH: Climb to 2500 then left turn direct IRS NDB and hold.
Procedure NA at night. Rwy 19 helicopter visibility reduction below 1 SM NA.	

AWOS-3 121.325	GREAT LAKES APP CON ★ 121.2 239.25	CLNC DEL 118.325	UNICOM 123.05 (CTAF) 1
-------------------	---------------------------------------	---------------------	---------------------------



CATEGORY	A	B	C	D
S-19	1520-1	605 (600-1)	1520-1¾	605 (600-1¾)
CIRCLING	1520-1	595 (600-1)	1620-2 695 (700-2)	1620-2¼ 695 (700-2¼)

