

WAAS  
CH **70425**  
**W02A**

APP CRS  
**016°**

Rwy Idg **5500**  
TDZE **666**  
Apt Elev **666**

RNAV (GPS) RWY 2

ROCK HILL/YORK COUNTY/BRYANT FLD (UZA)

▼

▲

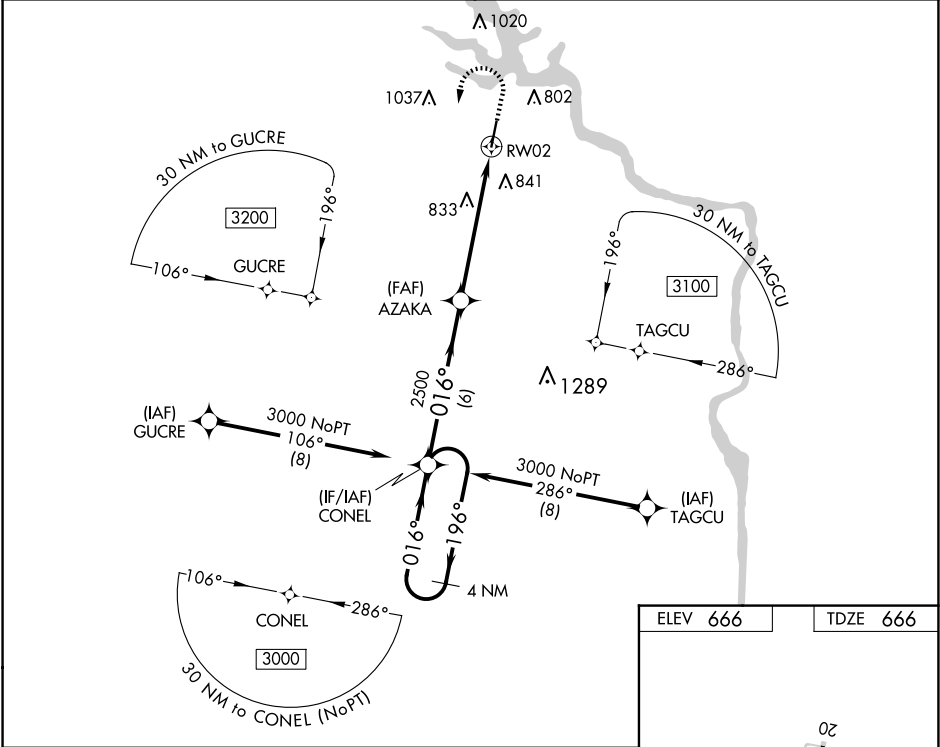
Baro-VNAV and VDP NA when using Charlotte/Douglas Intl altimeter setting. For uncompensated Baro-VNAV systems, LNAV/VNAV NA below -9°C (16°F) or above 54°C (130°F). DME/DME RNP-0.3 NA. When local altimeter setting not received, use Charlotte/Douglas Intl altimeter setting and increase all DA 45 feet and all MDA 60 feet. Increase LNAV/VNAV all Cats visibility ¼ mile and LNAV Cat C/D visibility ¼ mile.

MALSR

MISSED APPROACH:

Climb to 1600 then climbing left turn to 3000 direct CONEL and hold.

ASOS <b>120.775</b>	CHARLOTTE APP CON <b>120.05 307.8</b>	GCO <b>121.725</b>	UNICOM <b>123.05</b> (CTAF) <b>1</b>
------------------------	--	-----------------------	---



4 NM Holding Pattern		CONEL		AZAKA		RW02	
3000		1600		3000		CONEL	
GP 3.00° TCH 41		*1.2 NM to RW02		*LNAV only.			
6 NM		4.4 NM		1.2 NM			
CATEGORY		A	B	C	D		
LPV DA		866-½		200 (200-½)			
LNAV/VNAV DA		1022-¾		356 (400-¾)			
LNAV MDA		1100-½		434 (500-½)		1100-¾ 434 (500-¾)	
CIRCLING		1140-1 474 (500-1)		1160-1 494 (500-1)		1340-2 674 (700-2) 1340-2¼ 674 (700-2¼)	

