


ILS Y or LOC Y RWY 2
ROCK HILL/YORK COUNTY/BRYANT FLD (UZA)

MALSR

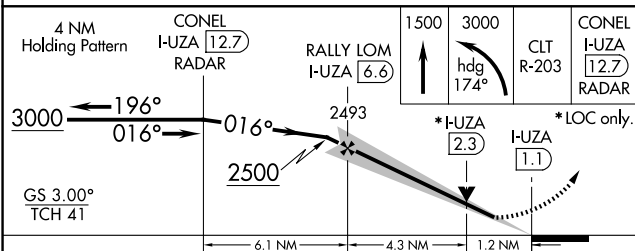
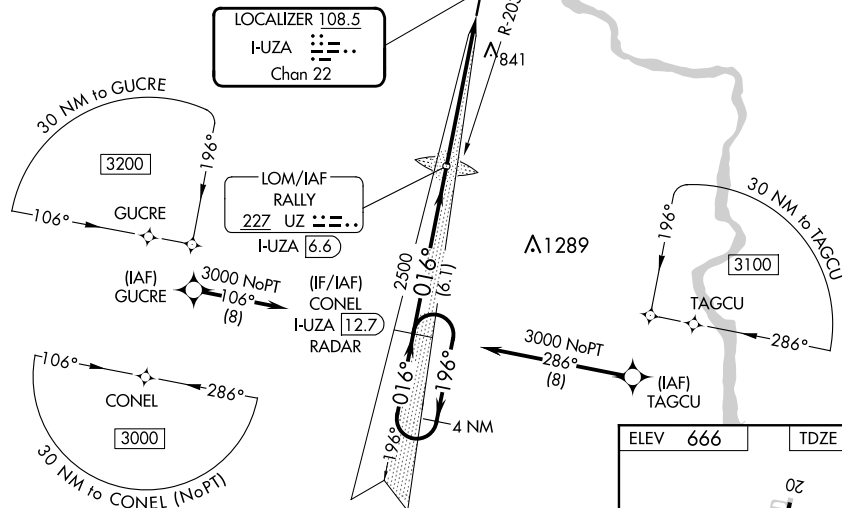
MISSED APPROACH: Climb to 1500 then climbing left turn to 3000 on heading 174° and CLT VOR/DME R-203 to CONEL/I-UZA 12.7 DME/RADAR and hold.


ASOS 120.775	CHARLOTTE APP CON 120.05 307.8	GCO 121.725	UNICOM 123.05 (CTAF) 
-----------------	-----------------------------------	----------------	---

GPS REQUIRED
FOR TERMINAL
ARRIVAL AREA

ALTERNATE MISSED APCH FIX

RALLY
UZ ::=. 227
I-UZA 6.6



CATEGORY	A	B	C	D
S-ILS 2	866-1/2 200 (200-1/2)			
S-LOC 2	1080-1/2 414 (500-1/2)		1080-3/4 414 (500-3/4)	
 CIRCLING	1140-1 474 (500-1)	1160-1 494 (500-1)	1340-2 674 (700-2)	1340-2 1/4 674 (700-2 1/4)

