

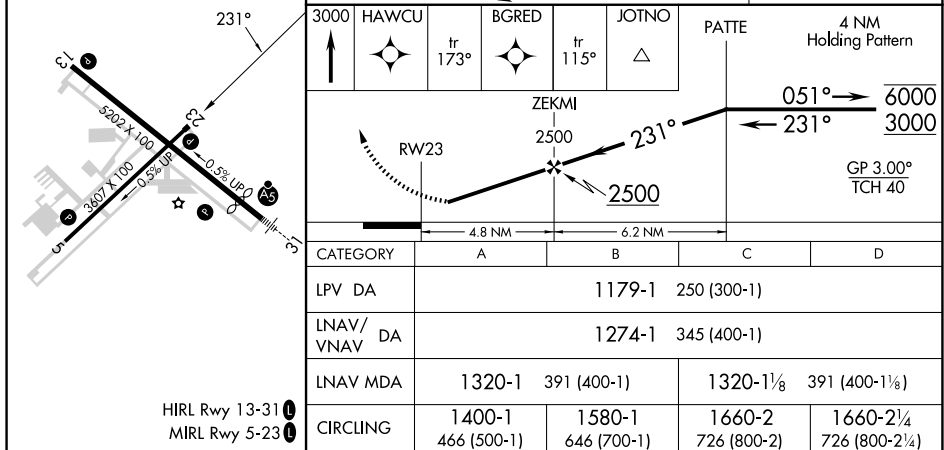
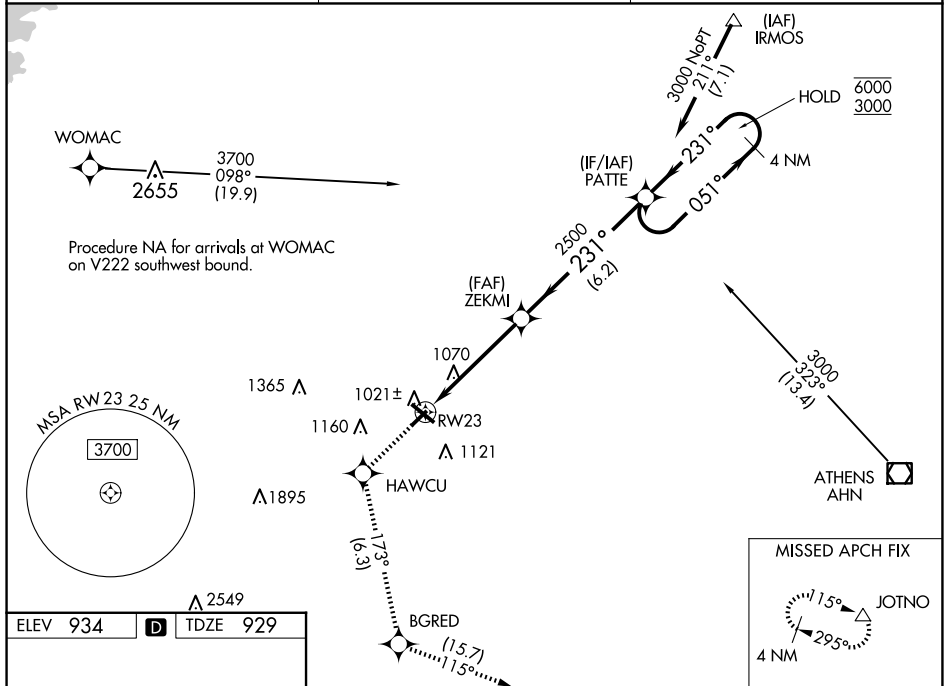
24025

# RNAV (GPS) RWY 23

**T** For uncompensated Baro-VNAV systems, LNAV/VNAV NA below -16°C or above 54°C. Straight-in Rwy 23 NA at night, Circling Rwy 13, 23 NA at night. Rwy 23 helicopter visibility reduction below 1 SM NA.

**MISSED APPROACH:** Climb to 3000 direct HAWCU and on track 173° to BGRED and on track 115° to JOTNO and hold.

AWOS-3 <b>118.575</b>	ATLANTA APP CON ★ <b>132.475 291.1</b>	UNICOM <b>123.0 (CTAF) 1</b>
--------------------------	---	---------------------------------



BARROW COUNTY (WDR)  
RNAV (GPS) RWY 23

SE-4, 07 AUG 2025 to 04 SEP 2025