

NDB BMW	APP CRS	Rwy Idg	4600
404	312°	TDZE	922
		Apt Elev	934

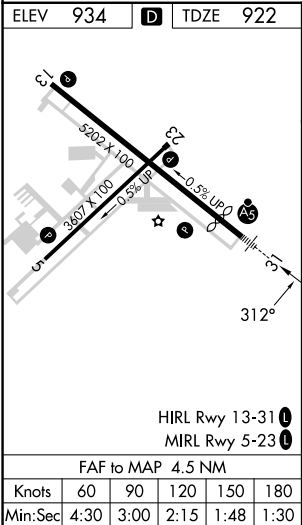
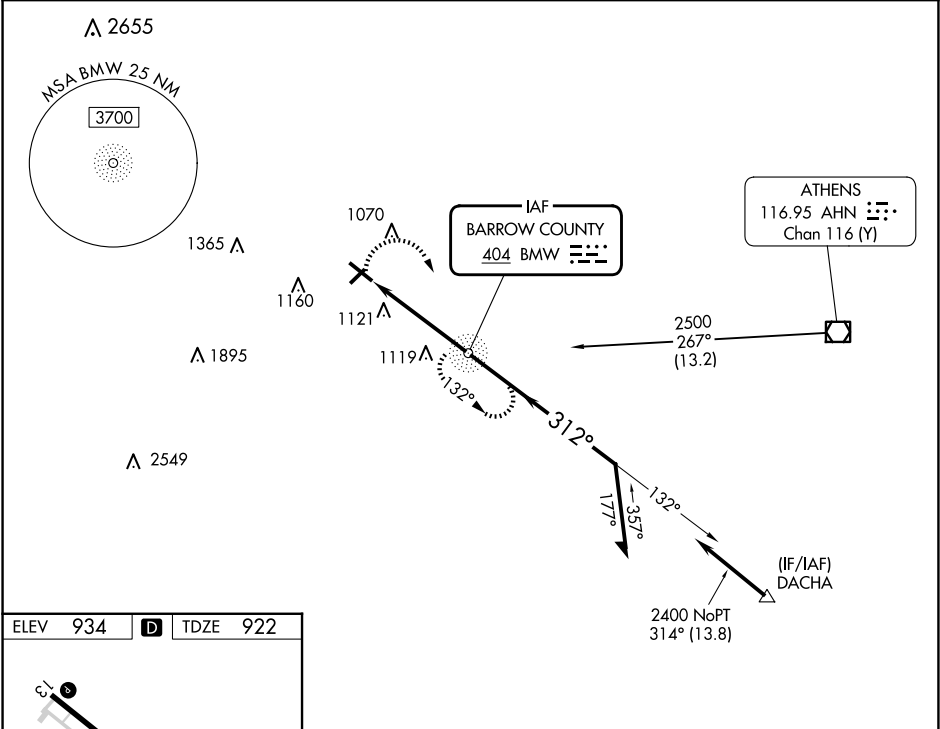
NDB RWY 31  
BARROW COUNTY (WDR)

**⚠** For inop ALS, increase S-31 Cat A/B visibility to 1 SM. Circling Rwy 13, 23 NA at night. Rwy 31 helicopter visibility reduction below ¾ SM NA.

MALSR

MISSED APPROACH: Climbing right turn to 2500 direct BMW NDB and hold.

AWOS-3 118.575	ATLANTA APP CON ★ 132.475 291.1	UNICOM 123.0 (CTAF) 0
-------------------	------------------------------------	--------------------------



2500

BMW

VGSI and descent angles not coincident  
(VGSI Angle 3.00/TCH 45).

BMW NDB

132°

Remain within 10 NM

2500

312°

2400

3.08°

TCH 30

4.5 NM

CATEGORY	A	B	C	D
S-31	1480-¾	558 (600-¾)	1480-1⅛	558 (600-1⅛)
CIRCLING	1480-1 546 (600-1)	1580-1 646 (700-1)	1660-2 726 (800-2)	1660-2¼ 726 (800-2¼)