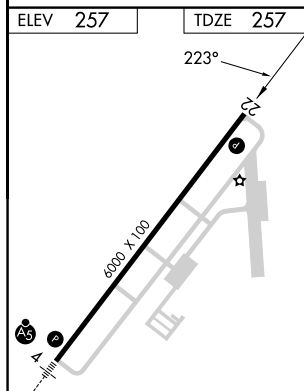
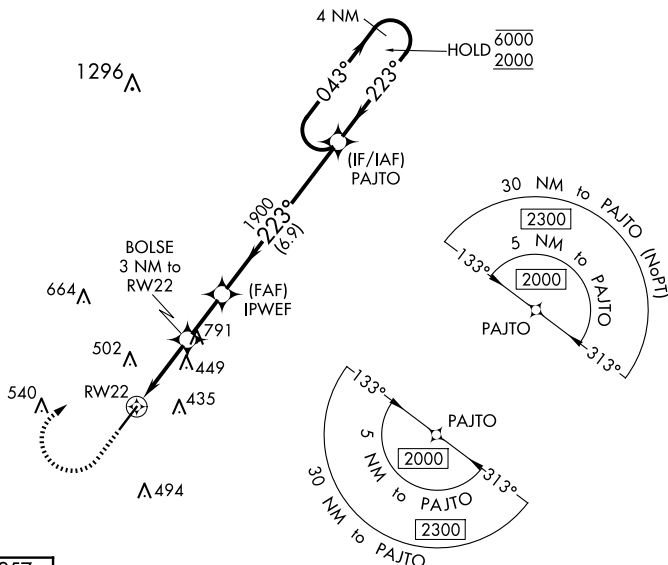



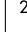

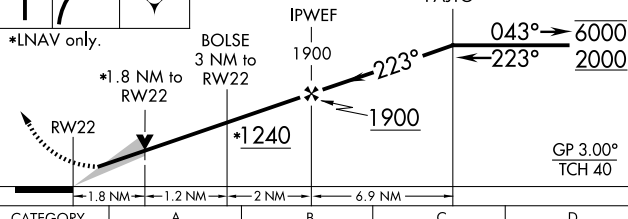
23110

RNAV (GPS) RWY 22
DOUGLAS MUNI (DQH)

MISSED APPROACH: Climb to 1200 then climbing right turn to 2000 direct PAJTO and hold.

UNICOM
122.8 (CTAF) **L**



  	VGS1 and RNAV glidepath not coincident (VGS1 Angle 2.50/TCH 27).				4 NM Holding Pattern
*LNAV only.					
CATEGORY	A		B	C	D
LPV DA			507- $\frac{3}{4}$	250 (300- $\frac{3}{4}$)	
LNAV/ VNAV DA			567- $\frac{7}{8}$	310 (400- $\frac{7}{8}$)	
LNAV MDA	760-1 503 (600-1)		760-1 $\frac{7}{8}$ 503 (600-1 $\frac{3}{8}$)		
C CIRCLING	760-1 503 (600-1)		820-1 563 (600-1)	960-2 703 (800-2)	1160-3 903 (1000-3)

DOUGLAS MUNI (DQH)
RNAV (GPS) RWY 22

SE-4, 07 AUG 2025 to 04 SEP 2025