

CORDELE, GEORGIA

AL-5355 (FAA)

24361

WAAS CH 40106 W06A	APP CRS 056°	Rwy Idg 4882 TDZE 310 Apt Elev 310
----------------------------------------	------------------------	---------------------------------------------------------------

RNAV (GPS) RWY 6

CRISP COUNTY-CORDELE (CKF)

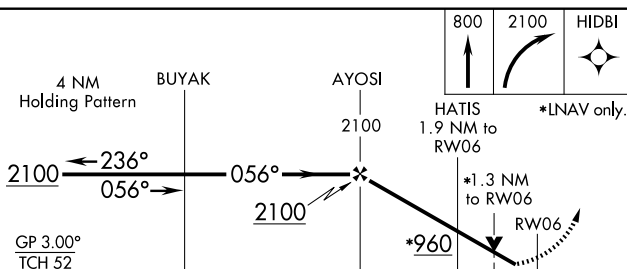
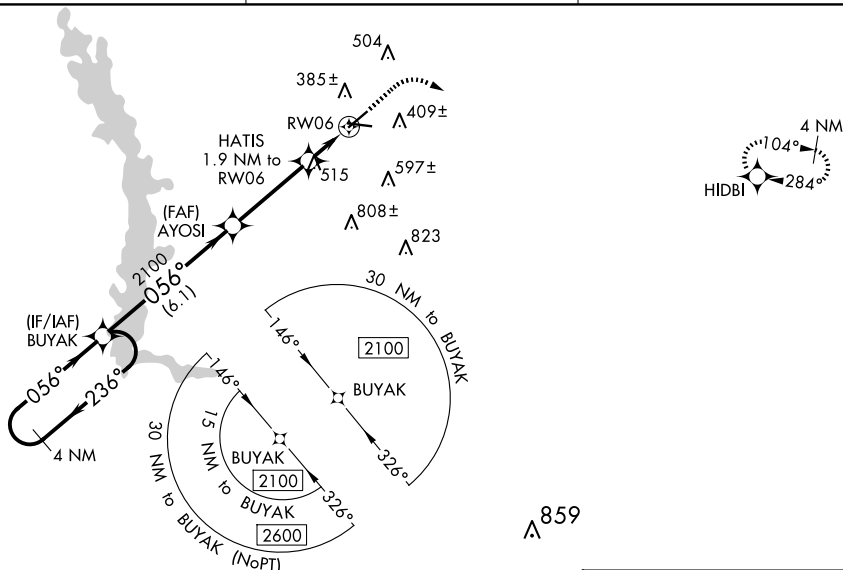
RNP APCH-GPS.


T
A For uncompensated Baro-VNAV systems, LNAV/VNAV NA below -15°C or above 54°C. Rwy 6 helicopter visibility reduction below $\frac{3}{4}$ SM NA. Straight-in Rwy 6 NA at night, Circling Rwy 6, 24, 28 NA at night.

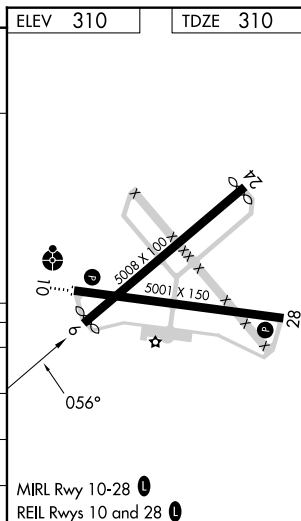
MISSED APPROACH: Climb to 800 then climbing right turn to 2100 direct HDBI and hold.

AWOS-3PT
119.325

JACKSONVILLE CENTER
125.75 363.075

UNICOM
123.050 (CTAF) **L**

CATEGORY	A	B	C	D
LPV DA	573-1 263 (300-1)			
LNAV/VNAV DA	647-1 337 (300-1)			
LNAV MDA	780-1 470 (500-1)		780-1 $\frac{3}{8}$ 470 (500-1 $\frac{3}{8}$)	
 CIRCLING	820-1 510 (600-1)		1080-2 $\frac{1}{4}$ 770 (800-2 $\frac{1}{4}$)	1160-2 $\frac{3}{4}$ 850 (900-2 $\frac{3}{4}$)



CORDELE, GEORGIA
Amdt 1B 08SEP22

31°59'N-83°46'W

CRISP COUNTY-CORDELE (CKF)
RNAV (GPS) RWY 6

SE-4, 07 AUG 2025 to 04 SEP 2025