

WAAS CH 99305 W28A	APP CRS 284°	Rwy Idg 5001 TDZE 309 Apt Elev 310
--	------------------------	---

RNAV (GPS) RWY 28

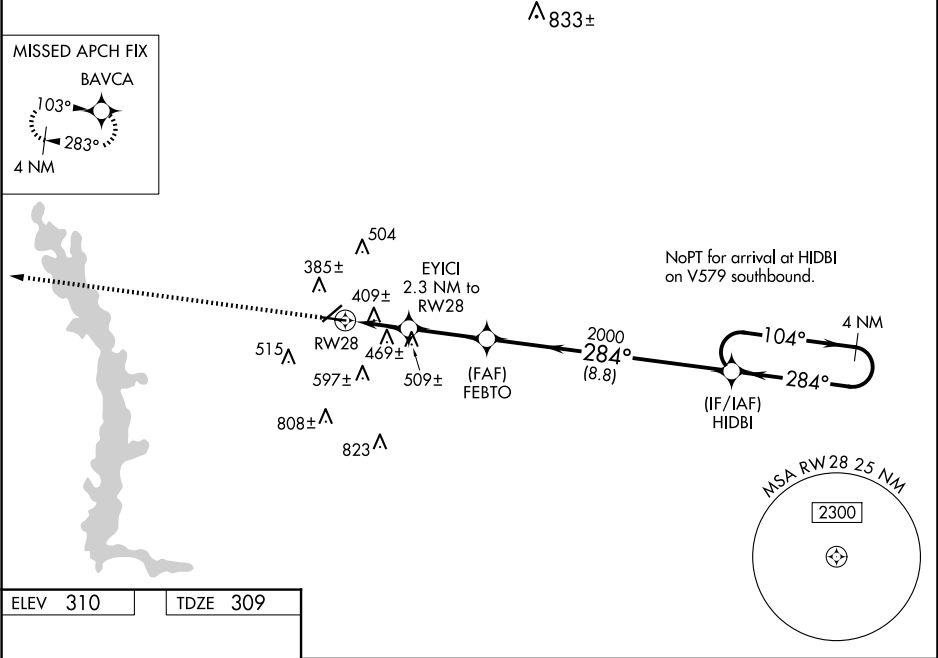
CRISP COUNTY-CORDELE (CKF)

RNP APCH-GPS.

⚠ For uncompensated Baro-VNAV systems, LNAV/VNAV NA below -1.5°C or above 54°C. Rwy 28 helicopter visibility reduction below 1 SM NA. Straight-in and Circling Rwy 28 NA at night.

MISSED APPROACH: Climb to 2000 direct BAVCA and hold.

AWOS-3PT 119.325	JACKSONVILLE CENTER 125.75 363.075	UNICOM 123.050 (CTAF) 1
----------------------------	--	--



2000

↑

BAVCA

✧

VGSI and RNAV glidepath not coincident (VGSI Angle 3.00°/TCH 45).

4 NM

Holding Pattern

*LNAV only.

EWICI 2.3 NM to RWY 28

FEBTO 2000

HIDBI

104° →

← 284°

2100

GP 3.00° TCH 55

2000

284°

1080*

2.3 NM

2.8 NM

8.8 NM

CATEGORY	A	B	C	D
LPV DA	669-1½		360 (400-1½)	
LNAV/VNAV DA	769-1½		460 (500-1½)	
LNAV MDA	720-1	411 (500-1)	720-1½	411 (500-1½)
CIRCLING	820-1	510 (600-1)	1080-2¼ 770 (800-2¼)	1160-2¾ 850 (900-2¾)

MIRL Rwy 10-28

REIL Rwy 10 and 28