

WAAS CH <b>90206</b> <b>W24A</b>	APP CRS <b>236°</b>	Rwy Idg <b>4868</b> TDZE <b>308</b> Apt Elev <b>310</b>
--	------------------------	---

RNAV (GPS) RWY 24

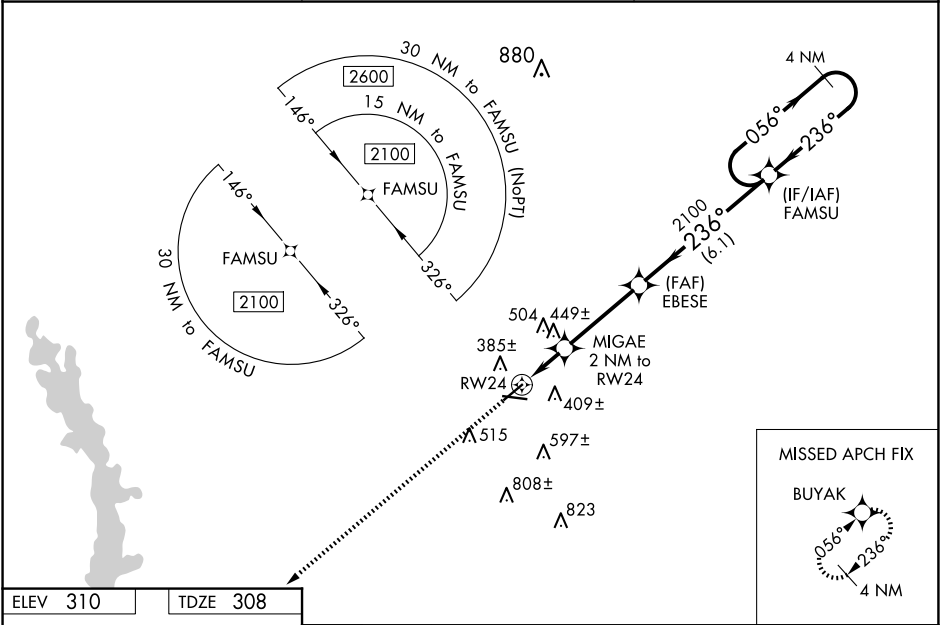
CRISP COUNTY-CORDELE (CKF)

RNP APCH-GPS.

For uncompensated Baro-VNAV systems, LNAV/VNAV NA below -15°C or above 54°C. Rwy 24 helicopter visibility reduction below ¾ SM NA. Straight-in Rwy 24 NA at night, Circling Rwy 6, 24, 28 NA at night.

MISSED APPROACH: Climb to 2100 direct BUYAK and hold.

AWOS-3PT <b>119,325</b>	JACKSONVILLE CENTER <b>125.75 363,075</b>	UNICOM <b>123,050 (CTAF) 1</b>
----------------------------	--	-----------------------------------



ELEV 310	TDZE 308
----------	----------

2100

BUYAK

\*LNAV only.

RW24

MIGAE 2 NM to RW24

EBESE 2100

FAMSU

236°

056°

236°

980\*

2100

2100

GP 3.00°

TCH 45

1.1 NM

0.9 NM

3.5 NM

6.1 NM

CATEGORY	A	B	C	D
LPV DA	583-1		275 (300-1)	
LNAV/VNAV DA	584-1		276 (300-1)	
LNAV MDA	700-1 392 (400-1)		700-1½ 392 (400-1½)	
CIRCLING	820-1 510 (600-1)		1080-2¼ 770 (800-2¼)	1160-2¾ 850 (900-2¾)

MIRL Rwy 10-28 1  
REIL Rwy 10 and 28 1