

CORDELE, GEORGIA

AL-5355 (FAA)

24361

WAAS CH 57905 W10A	APP CRS 103°	Rwy Idg 5001 TDZE 308 Apt Elev 310
--	------------------------	---

RNAV (GPS) RWY 10

CRISP COUNTY-CORDELE (CKF)

RNP APCH-GPS.

T For uncompensated Baro-VNAV systems, LNAV/VNAV NA below -15°C or above 54°C. Rwy 10 helicopter visibility reduction below $\frac{3}{4}$ SM NA. Circling Rwy 28 NA at night. Inop table does not apply to LPV and LNAV all Cats. For inop ALS, increase LNAV/VNAV Cat A/B visibility to $1\frac{3}{8}$ SM.

ODALS



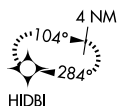
MISSED APPROACH: Climb to 2100 direct HIDBI and hold.

AWOS-3PT
119.325

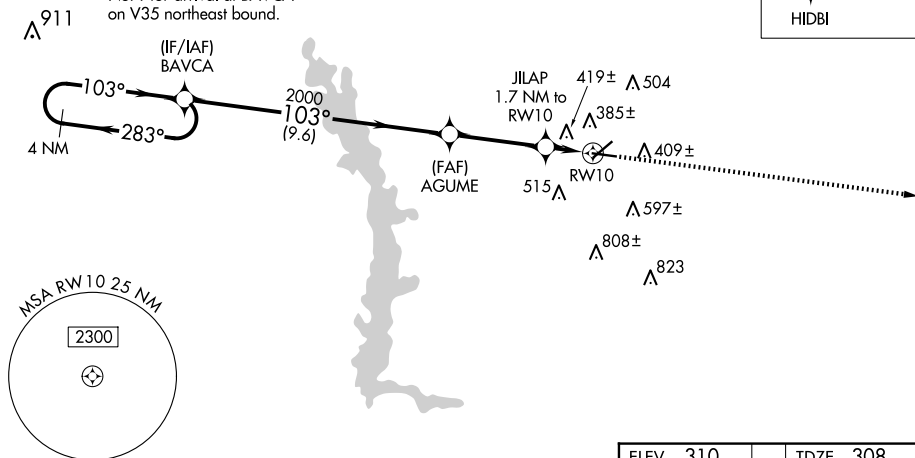
JACKSONVILLE CENTER
125.75 363.075

UNICOM
123.050 (CTAF) **L**

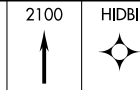
MISSED APCH FIX



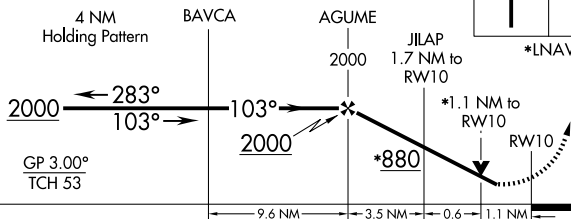
NoPT for arrival at BAVCA
on V35 northeast bound.



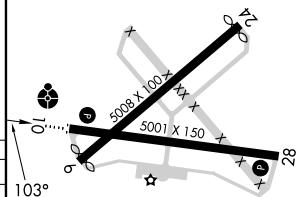
VGSI and RNAV glidepath not coincident
(VGSI Angle 3.00/TCH 42).



*LNAV only.



CATEGORY	A	B	C	D
LPV DA	612-1 304 (400-1)			
LNAV/ VNAV DA	726-1¼ 418 (300-1¼)			
LNAV MDA	680-1 372 (400-1)			
C CIRCLING	820-1 510 (600-1)	1080-2¼ 770 (800-2¼)	1160-2¾ 850 (900-2¾)	

MIRL Rwy 10-28 **L**REIL Rwy 10 and 28 **L**

CORDELE, GEORGIA

Amdt 1B 08SEP22

31°59'N-83°46'W

CRISP COUNTY-CORDELE (CKF)

RNAV (GPS) RWY 10

SE-4, 07 AUG 2025 to 04 SEP 2025