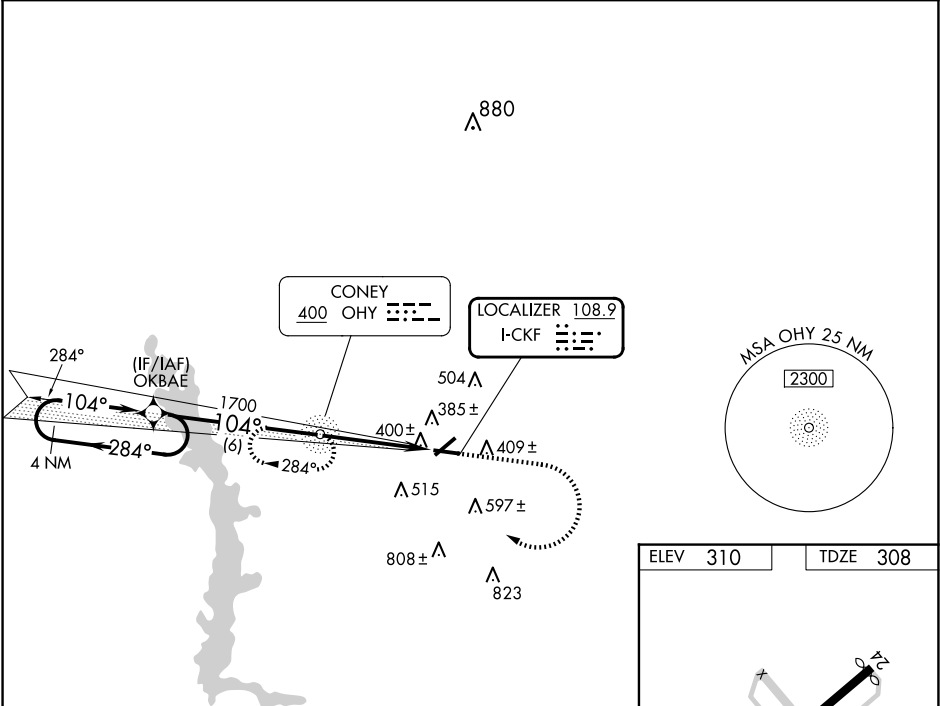


LOC I-CKF 108.9	APP CRS 104°	Rwy Idg TDZE Apt Elev 5001 308 310	LOC RWY 10 CRISP COUNTY-CORDELE (CKF)
---------------------------	------------------------	------------------------------------------------------------------------	------------------------------------------

RNP APCH-GPS or RADAR required.		
<div><div>▼</div><div>NA</div><div>Rwy 10 helicopter visibility reduction below 1 SM NA. ADF required. Circling Rwy 28 NA at night. When local altimeter setting not received, use Albany altimeter setting and increase all MDA 100 feet and increase S-10 Cat C/D visibility ½ SM and Circling Cat C/D visibility ¼ SM. Inop table does not apply to S-10. Inop table does not apply to S-10 Cat A/B when using Albany altimeter setting. For inop ALS, when using Albany altimeter setting increase S-10 Cat C/D visibility to 1¾ SM.</div></div>	<div><div>ODALS</div><div></div></div>	<div>MISSED APPROACH: Climb to 800 then climbing right turn to 2200 direct OHY NDB and hold, continue climb-in-hold to 2200.</div>

AWOS-3PT 119.325	JACKSONVILLE CENTER 125.75 363.075	UNICOM 123.050 (CTAF) 1
----------------------------	----------------------------------------------	------------------------------------------



4 NM Holding Pattern		OKBAE		800		2200		OHY				
2200 ← 284°		104° →		104°		1700		3.08° TCH 42				
		6 NM		4.2 NM								
CATEGORY	A		B		C		D					
S-10	660-1		352 (400-1)						FAF to MAP 4.2 NM			
CIRCLING	820-1		510 (600-1)		1080-2¼		1160-2¾		Knots		60 90 120 150 180	
					770 (800-2¼)		850 (900-2¾)		Min:Sec		4:12 2:48 2:06 1:41 1:24	