

WAAS CH <b>77701</b> <b>W27A</b>	APP CRS <b>274°</b>	Rwy Idg TDZE <b>15</b> Apt Elev <b>19</b>	<b>5000</b>
--	------------------------	---	-------------

RNAV (GPS) RWY 27

CHARLESTON EXEC (JZI)

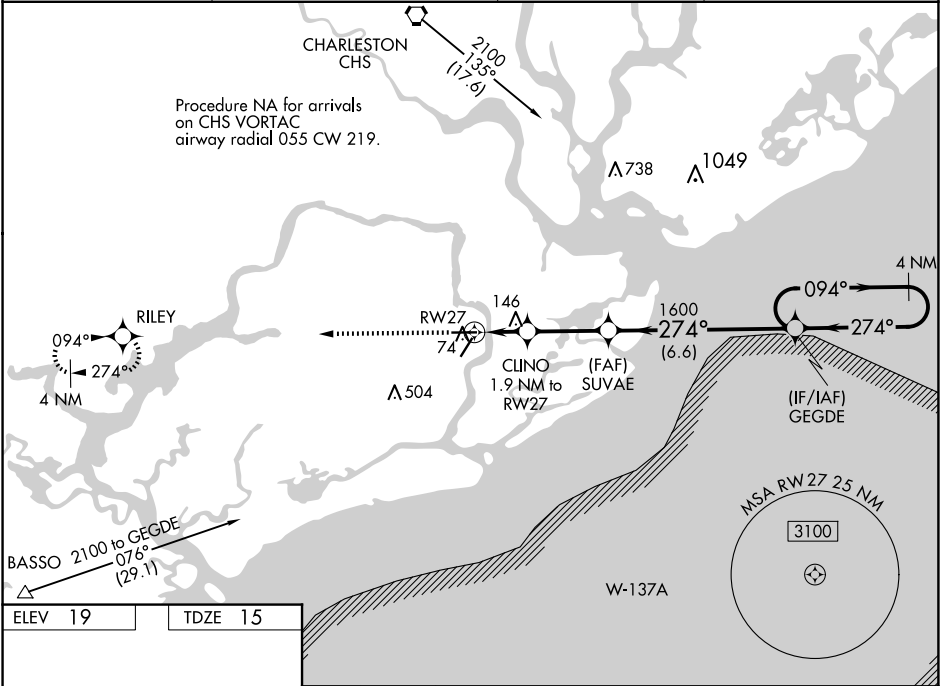
▼

▲

For uncompensated Baro-VNAV systems, LNAV/VNAV NA below -15°C (5°F) or above 54°C (130°F). When local altimeter setting not received, use Charleston AFB/Intl altimeter setting and increase LPV DA to 297 feet, increase LNAV/VNAV DA to 335 feet, increase all MDAs 40 feet; increase LPV all Cats, LNAV/VNAV all Cats, and LNAV Cats C/D visibility 1⁄8 SM, and Circling visibility Cats C/D 1⁄4 SM. Baro-VNAV and VDP NA when using Charleston AFB/Intl altimeter setting.

MISSED APPROACH:  
Climb to 2000 direct RILEY and hold.

AWOS-3 <b>123.775</b>	CHARLESTON APP CON <b>120.7 306.925</b>	CLNC DEL <b>119.85</b>	UNICOM <b>122.8 (CTAF) 0</b>
--------------------------	--	---------------------------	---------------------------------



ELEV 19	TDZE 15
---------	---------

2000

RILEY

274° to RW27

5350 X 100

4313 X 150

CLINO 1.9 NM to RW27

SUVAE 1600

GEGDE 4 NM Holding Pattern

094° → 2100

← 274°

GP 3.00°  
TCH 42

\*LNAV only.

RW27

\*1.1 NM to RW27

640\*

1.1 NM 0.8 NM 3 NM 6.6 NM

CATEGORY	A	B	C	D
LPV DA	265-7⁄8 250 (300-7⁄8)			
LNAV/VNAV DA	303-1 288 (300-1)			
LNAV MDA	400-1	385 (400-1)	400-1 1⁄8	385 (400-1 1⁄8)
CIRCLING	460-1 441 (500-1)	480-1 461 (500-1)	860-2 1⁄2 841 (900-2 1⁄2)	860-2 3⁄4 841 (900-2 3⁄4)