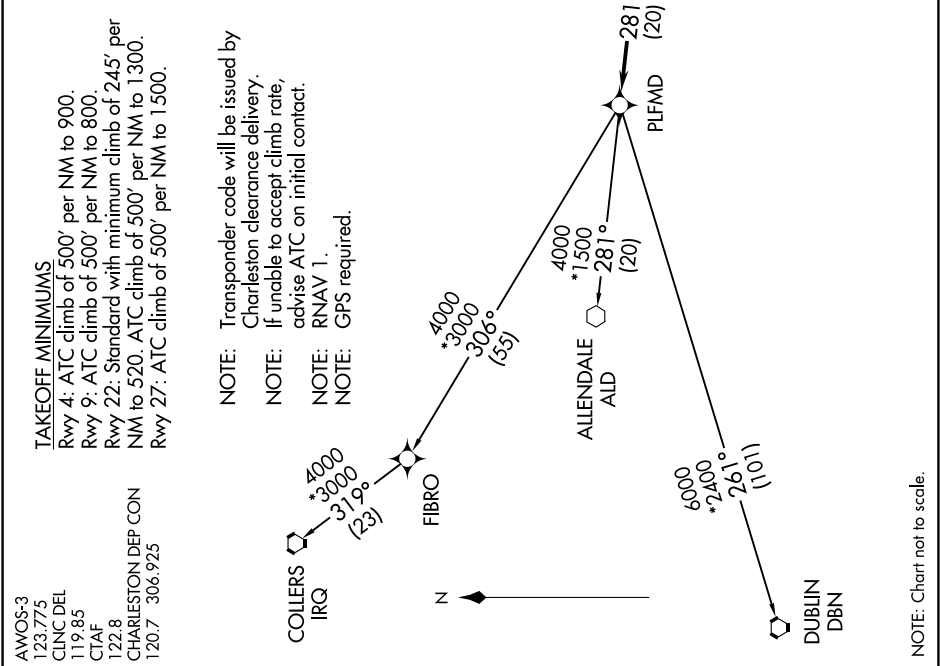


SE-2, 07 AUG 2025 to 04 SEP 2025

DEPARTURE ROUTE DESCRIPTION
<p>TAKEOFF RUNWAY 4: Climb heading 037° to 520 MSL, then left turn direct RNDAH, cross RNDAH at or above 2000, direct GECHC and then on depicted route to PLFMD, thence. . . .</p> <p>TAKEOFF RUNWAY 9: Climb heading 094° to 520 MSL, then right turn direct RNDAH, cross RNDAH at or above 2000, direct GECHC and then on depicted route to PLFMD, thence. . . .</p> <p>TAKEOFF RUNWAY 22: Climb heading 217° to 520 MSL, then right turn direct RNDAH, cross RNDAH at or above 2000, direct GECHC and then on depicted route to PLFMD, thence. . . .</p> <p>TAKEOFF RUNWAY 27: Climb heading 274° to 520 MSL, then direct RNDAH, cross RNDAH at or above 2000, direct GECHC and then on depicted route to PLFMD, thence. . . .</p> <p>... via assigned transition, maintain 2000. Expect clearance to filed altitude/flight level within ten (10) minutes after departure.</p> <p><u>ALLEDALE TRANSITION (EXTVE1.ALD)</u> <u>COLLIERS TRANSITION (EXTVE1.IRQ)</u> <u>DUBLIN TRANSITION (EXTVE1.DBN)</u></p>



SE-2, 07 AUG 2025 to 04 SEP 2025