

WAAS CH 90412 W31A	APP CRS 310°	Rwy Idg 5505 TDZE 1162 Apt Elev 1162
--	------------------------	---

RNAV (GPS) RWY 31
FAIRMONT MUNI (FRM)

RNP APCH-GPS.

T For uncompensated Baro-VNAV systems, procedure NA below -17° C or above 54°C. For inop ALS, increase LPV all Cats visibility to 3/8 SM and LNAV/VNAV all Cats visibility to 1 1/8 SM.

MALSR



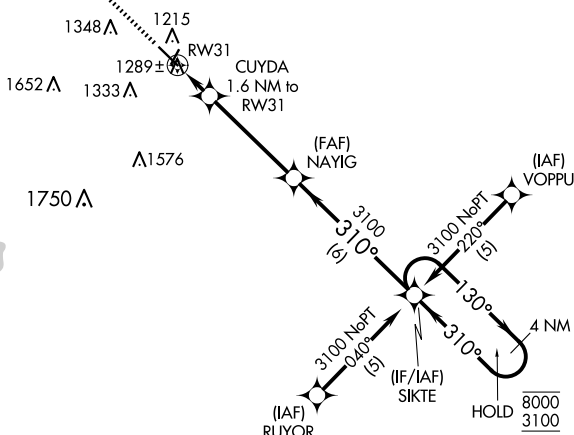
MISSED APPROACH: Climb to 3100 direct UCEVA and hold.

AWOS-3PT
120.025

MINNEAPOLIS CENTER
127.75 257.7

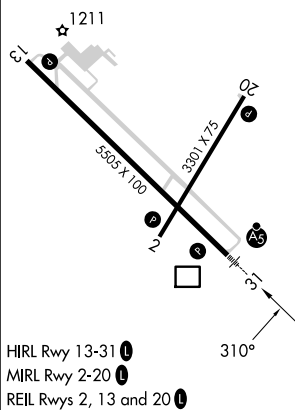
UNICOM
122.8 (CTAF) **L**

MISSED APCH FIX





ELEV 1162

TDZE 1162

HIRL Rwy 13-31 **L**MIRL Rwy 2-20 **L**REIL Rwy 2, 13 and 20 **L**

FAIRMONT, MINNESOTA

Orig-B 07OCT21

3100	UCEVA
	

VGSI and RNAV glidepath not coincident (VGSI Angle 3.00/TCH 40).

NAYIG

SIKTE 4 NM
Holding Pattern

CUYD
1.6 NM
RW31 RW3

3100

[illegible]

310°

23

8000

3100

5100

CB 3.008

GP 3.00
TCH 59

10157

CATEGORY	A	B	C	D
LPV DA	1467- $\frac{1}{2}$ 305 (400- $\frac{1}{2}$)			
RNAV/ VNAV DA	1581- $\frac{3}{4}$ 419 (500- $\frac{3}{4}$)			
RNAV MDA	1560- $\frac{1}{2}$ 398 (400- $\frac{1}{2}$)		1560- $\frac{5}{8}$ 398 (400- $\frac{5}{8}$)	
C CIRCLING	1660-1 498 (500-1)		1980-2 $\frac{1}{2}$ 818 (900-2 $\frac{1}{2}$)	1980-2 $\frac{3}{4}$ 818 (900-2 $\frac{3}{4}$)

FAIRMONT, MINNESOTA

Orig-B 07OCT21

FAIRMONT MUNI (FRM)

RNAV (GPS) RWY 31

43°39'N-94°25'W

NC-1, 07 AUG 2025 to 04 SEP 2025