

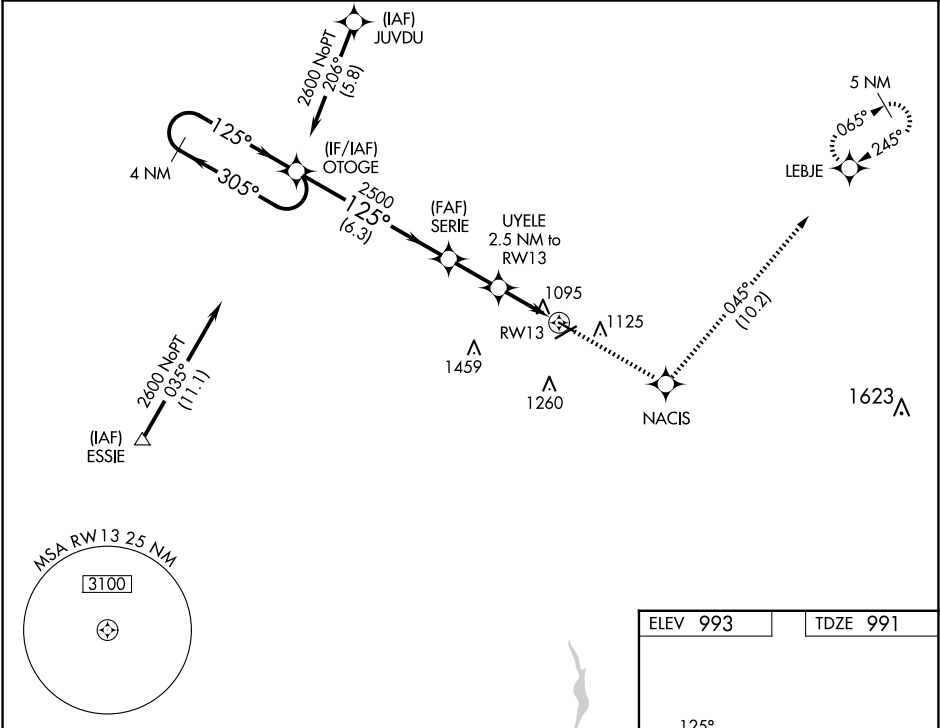
APP CRS	Rwy Idg	3498
125°	TDZE	991
	Apt Elev	993

RNAV (GPS) RWY 13

MARION MUNI (MNN)

RNP APCH.	MISSED APPROACH: Climb to 3000 direct NACIS and on track 045° to LEBJE and hold.
<div><div>▼</div><div>⚠</div></div> Rwy 13 helicopter visibility reduction below ¾ SM NA. VDP NA when using Ohio State University altimeter setting. When local altimeter setting not received, use Ohio State University altimeter setting: increase all MDAs 100 feet and visibility Cat C/D ¾ SM.	

ASOS 119.975	CLEVELAND APP CON ★ 128.35 360.65	CLNC DEL 126.8	UNICOM 122.8 (CTAF) 0
-----------------	--------------------------------------	-------------------	--------------------------



VGSi and descent angles not coincident (VGSi Angle 3.00/TCH 21).					3000	NACIS	tr 045°	LEBJE
4 NM Holding Pattern					OTOGE	SERIE	UYELE 2.5 NM to RW13	
2600					305°	125°	2500	1800
6.3 NM					2.1 NM	1.4 NM	1.1	
CATEGORY	A	B	C	D				
LNVA MDA	1360-1 369 (400-1)				1360-1¼ 369 (400-1¼)			
CIRCLING	1480-1 487 (500-1)	1500-1 507 (600-1)	1700-2 707 (800-2)	1820-2¾ 827 (900-2¾)				
					REIL Rws 7, 13, 25 and 31 0			
					MIRL Rws 7-25 and 13-31 0			