

VORTAC FST	APP CRS	Rwy Ldg	7508
116.9	116°	TDZE	3002
Chan 116		Apt Elev	3011

VOR RWY 12

FORT STOCKTON-PECOS COUNTY (FST)

⚠

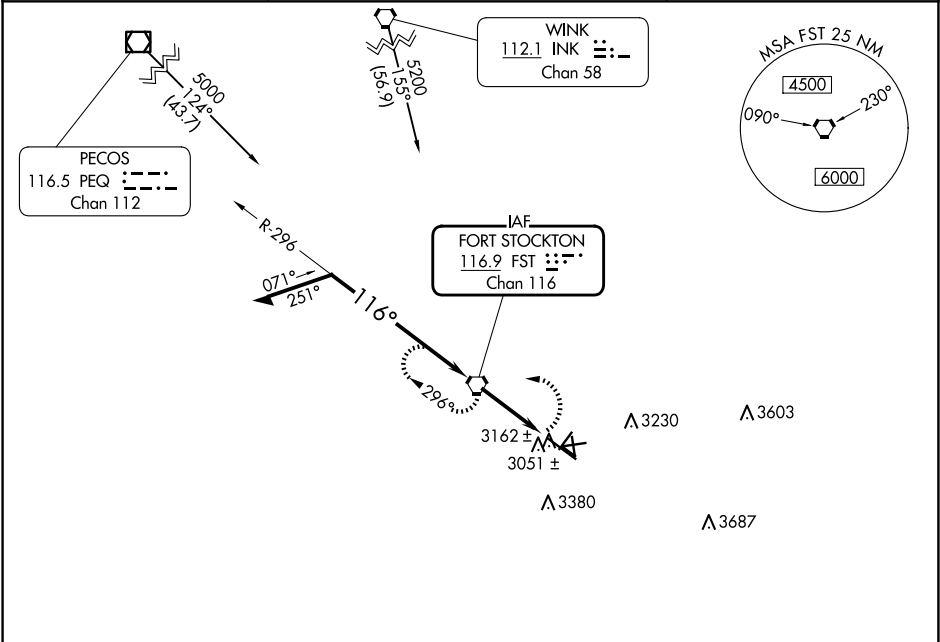
⚠

Circling NA to Rwys 7-25, 11-29 and 16-34.

Circling Rwy 3, 21, 30 NA at night.

MISSED APPROACH: Climbing left turn to 5000 direct FST VORTAC and hold.

ASOS	ALBUQUERQUE CENTER	UNICOM
118.525	135.875 292.15	122.8 (CTAF) 0



ELEV 3011

TDZE 3002

Remain within 10 NM

FST VORTAC

4800

296°

116°

4200

3.48°

TCH 45

3.2 NM

5000

FST

3.2

VGSI and descent angles not coincident (VGSI Angle 3.00/TCH 45).

MIRL Rwys 3-21 and 12-30 0

FAF to MAP 3.2 NM

Knots	60	90	120	150	180
Min:Sec	3:12	2:08	1:36	1:17	1:04