

MIAMI, FLORIDA

AL-5349 (FAA)

24137

WAAS CH 56400 W27A	APP CRS 273°	Rwy Idg 6000 TDZE 8 Apt Elev 10
--	------------------------	--

RNAV (GPS) RWY 27L

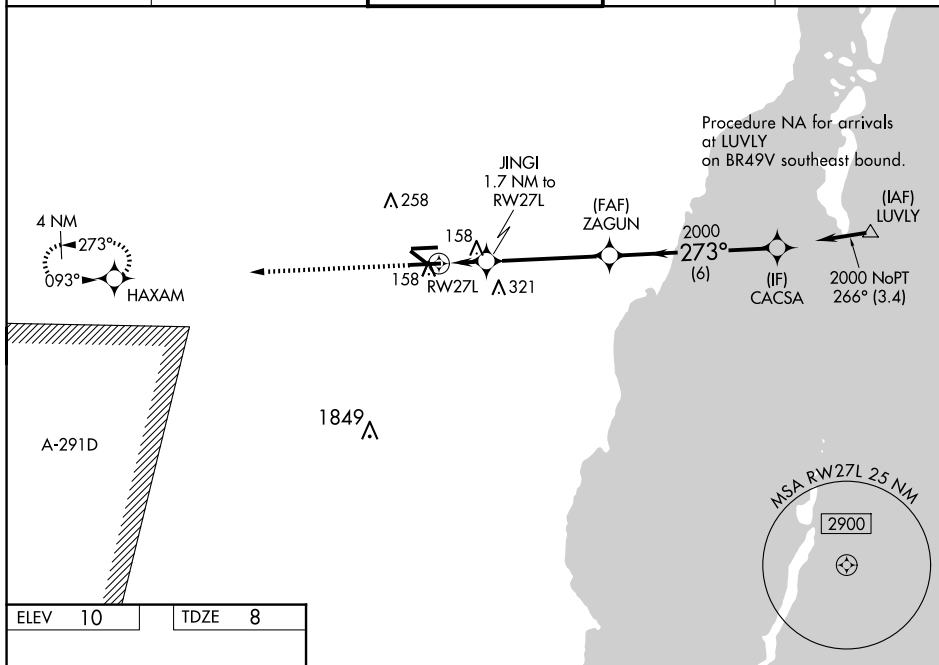
MIAMI EXEC (TMB)

RNP APCH.

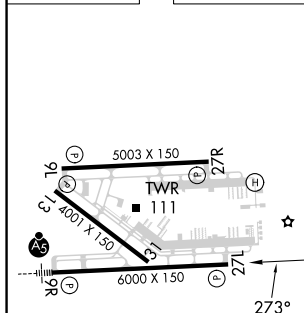
Circling Rwy 13, 31 NA at night. Rwy 27L helicopter visibility reduction below $\frac{3}{4}$ SM NA.
 For uncompensated Baro-VNAV systems, LNAV/VNAV NA below -1.5°C or above 43°C .
 VDP and Baro-VNAV NA when using Miami Intl altimeter setting. When local altimeter setting
 not received, use Miami Intl altimeter setting and increase LPV DA to 235 feet, LNAV/VNAV
 DA to 368 feet and all MDA 40 feet; increase LNAV Cats C/D visibility $\frac{1}{4}$ SM.

MISSED APPROACH:
Climb to 2000 direct
HAXAM and hold.

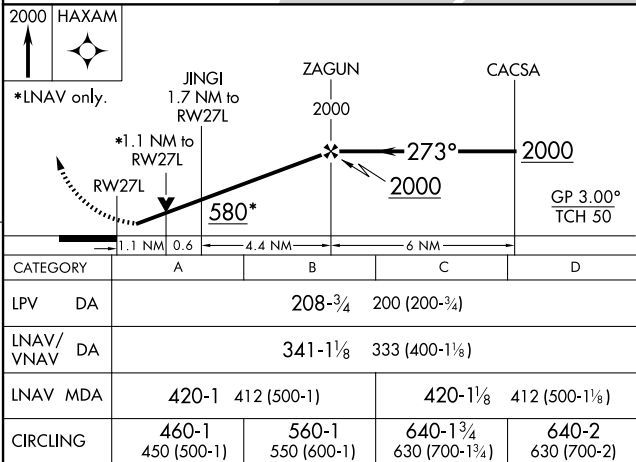
ATIS 124.0	MIAMI APP CON 125.5 354.1	MIAMI EXEC TOWER★ 118.9 (CTAF) 0	GND CON 121.7	CLNC DEL 133.0
----------------------	-------------------------------------	--	-------------------------	--------------------------



ELEV	10		TDZE	8
------	----	--	------	---



REIL Rwy 13
HIRL Rwy 9R-27L **(L)**
MIRL Rwy 9L-27R
MIRL Rwy 13-31 **(L)**



MIAMI, FLORIDA
Amdt 2E 02DEC21

25°39'N-80°26'W

MIAMI EXEC (TMB)

RNAV (GPS) RWY 27L

SE-3, 07 AUG 2025 to 04 SEP 2025