

APP CRS
190°

Rwy Idg
TDZE **1182**
Apt Elev **1182**

RNAV (GPS) RWY 19
FORD (IMT)

RNP APCH-GPS.

▼

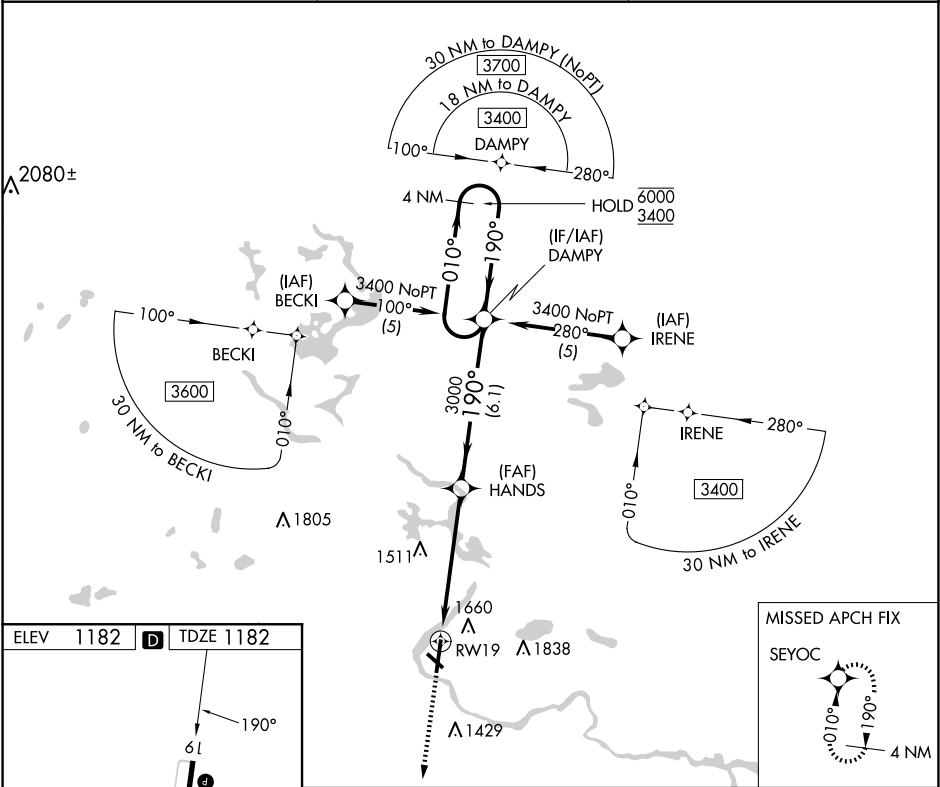
Circling NA northeast of Rwys 19 and 31. Rwy 19 helicopter visibility reduction below 1 SM NA.

▲

Straight-in Rwy 19 NA at night, Circling Rwy 13, 19, 31 NA at night.

MISSED APPROACH:
Climb to 3400 direct
SEYOC and hold.

ASOS 119.025	MINNEAPOLIS CENTER 121.25 322.5	UNICOM 122.8 (CTAF) 0
------------------------	---	---------------------------------



ELEV 1182 **D** TDZE 1182

MIRL Rwy 13-31 **0**
HIRL Rwy 1-19 **0**
REIL Rws 19 and 31 **0**

3400 SEYOC

4 NM Holding Pattern

HANDS

3000

3.05° TCH 42

RW19

5.5 NM

6.1 NM

CATEGORY	A	B	C	D
LNAV MDA	1760-1	578 (600-1)	1760-1½	578 (600-1½)
C CIRCLING	1760-1 578 (600-1)	1780-1 598 (600-1)	1780-1½ 598 (600-1½)	1840-2 658 (700-2)