

WAAS CH 50239 W01A	APP CRS 012°	Rwy Idg TDZE 844 Apt Elev 848
--	------------------------	---

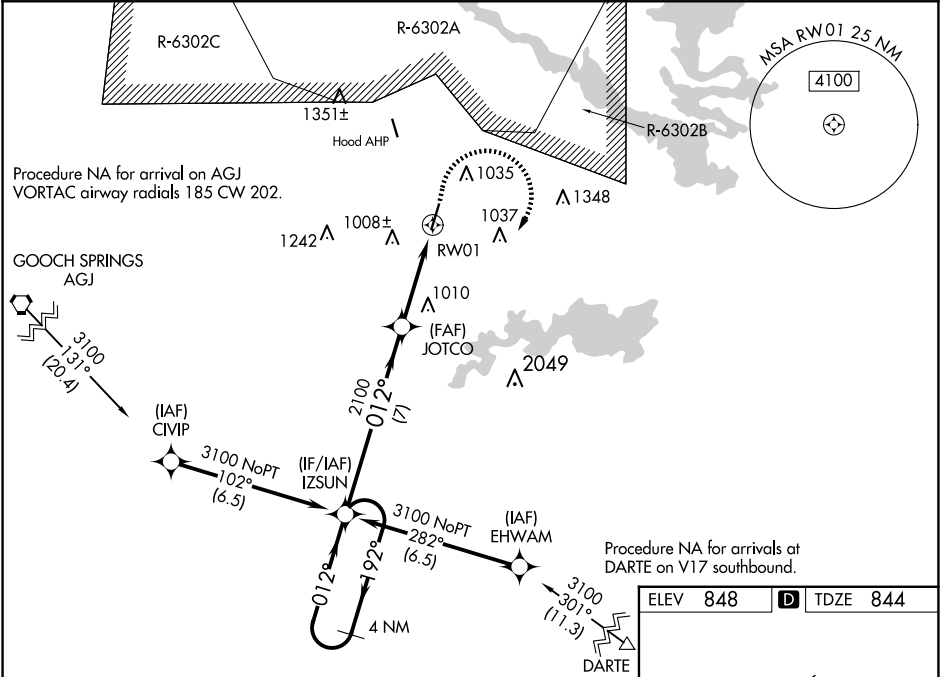
RNAV (GPS) RWY 1
SKYLARK FLD (IL,E)

▼

For uncompensated Baro-VNAV systems, LNAV/VNAV NA below -16°C (4°F) or above 54°C (130°F). DME/DME RNP-0.3 NA. Circling Rwy 19 NA at night.

MISSED APPROACH: Climb to 1300 then Climbing right turn to 3100 direct IZSUN and hold.

AWOS-3PT 128.575	GRAY APP CON 120.075 323.15	CLNC DEL 121.7	UNICOM 122.7 (CTAF)
----------------------------	---------------------------------------	--------------------------	-------------------------------



VGSI and RNAV Glidepath not coincident (VGSI Angle 3.00/TCH 72).

4 NM Holding Pattern

IZSUN

JOTCO

RWY01

GP 3.00° TCH 45

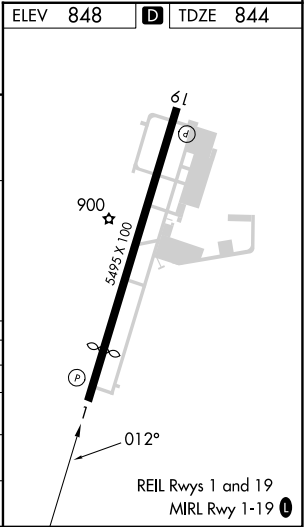
7 NM, 2.4 NM, 1.4 NM

3100, 2100, 1300, 3100, IZSUN

*1.4 NM to RWY01

*LNAV only

CATEGORY	A	B	C	D
LPV DA	1044-3 ³ / ₄	200 (200-3 ³ / ₄)		NA
LNAV/VNAV DA	1608-3	764 (800-3)		NA
LNAV MDA	1360-1	516 (600-1)	1360-1 ³ / ₈ 516 (600-1 ³ / ₈)	NA
CIRCLING	1360-1	512 (500-1)	1440-1 ¹ / ₂ 592 (600-1 ¹ / ₂)	NA



SC-3, 07 AUG 2025 to 04 SEP 2025

SC-3, 07 AUG 2025 to 04 SEP 2025