

WAAS CH <b>99729</b> <b>W32A</b>	APP CRS <b>323°</b>	Rwy Ldg <b>4755</b> TDZE <b>23</b> Apt Elev <b>23</b>
--	------------------------	---

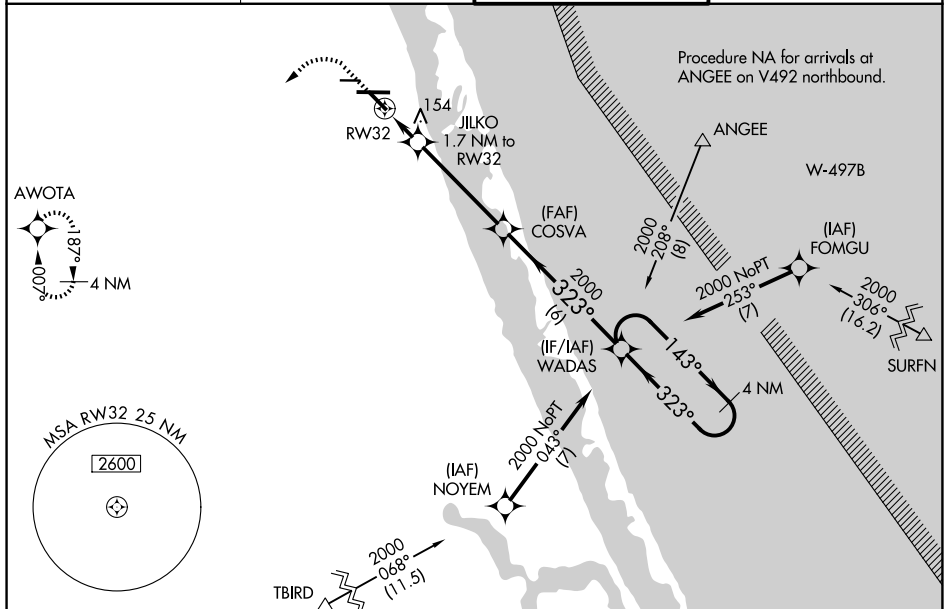
# RNAV (GPS) RWY 32

## TREASURE COAST INTL (FPR)

**A** For uncompensated Baro-VNAV systems, LNAV/VNAV NA below -15C (5°F) or above 43°C (109°F). DME/DME RNP-0.3 NA. When local altimeter setting not received, use Vero Beach altimeter setting and increase LPV DA to 325, LNAV/VNAV DA to 329 feet and MDA 40 feet; increase LPV all Cats, LNAV/VNAV all Cats, and LNAV Cats C/D visibility ½ SM. Increase Circling visibility Cat C/D ¼ SM. Baro-VNAV NA when using Vero Beach altimeter setting.

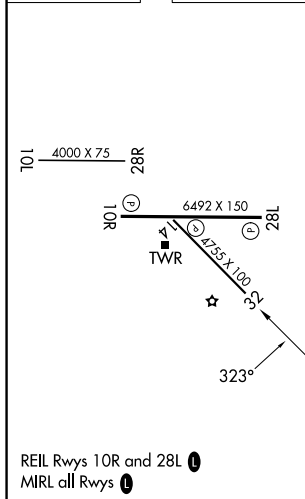
**MISSED APPROACH:** Climb to 520 then climbing left turn to 2000 direct AWOTA and hold.

ATIS <b>134.825</b>	PALM BEACH APP CON <b>132.8</b>	FORT PIERCE TOWER ★ <b>128.2 (CTAF) 0</b>	GND CON (GCO) <b>119.55</b>
------------------------	------------------------------------	--	--------------------------------



ELEV 23	<b>D</b>	TDZE 23
---------	----------	---------

Procedure NA for arrivals at TBIRD  
on V159 southbound and V531 northeast bound.

[illegible]TREASURE COAST INTL (FPR)  
RNAV (GPS) RWY 32