

APP CRS	Rwy Ldg	6434
292°	TDZE	23
	Apt Elev	23

RNAV (GPS) RWY 28L
TREASURE COAST INTL (FPR)

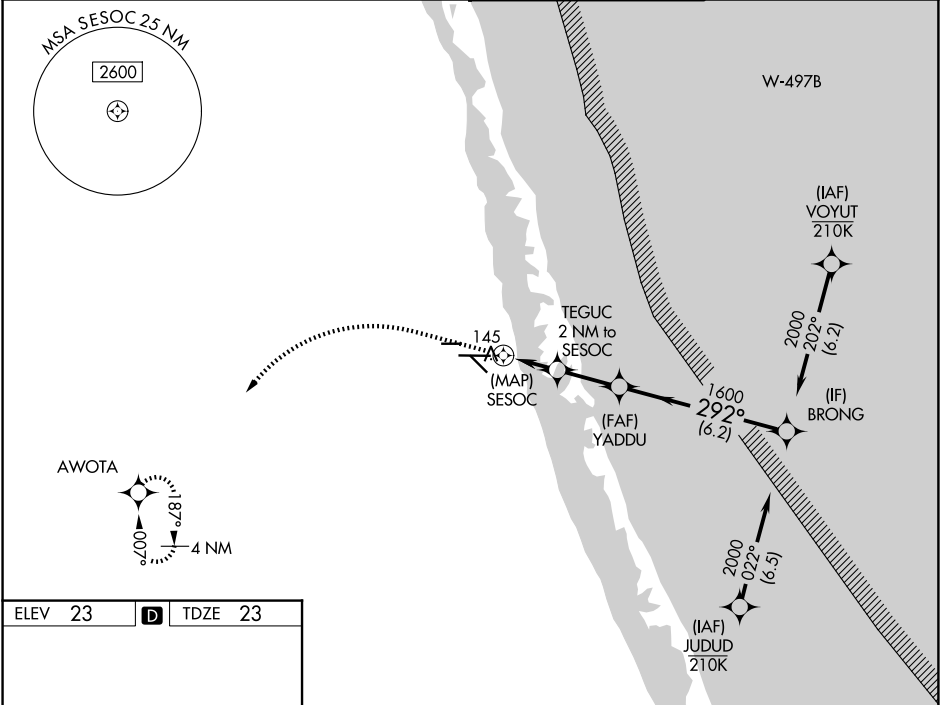
RNP APCH-GPS.

⚠

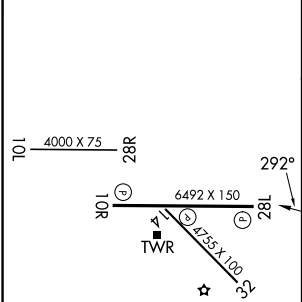
For uncompensated Baro-VNAV systems, LNAV/VNAV NA below -15°C or above 54°C.
Rwy 28L helicopter visibility reduction below ¾ SM NA.

MISSED APPROACH: Climb to 440 then climbing left turn to 2000 direct AWOTA and hold.

ATIS 134.825	PALM BEACH APP CON 132.8	FORT PIERCE TOWER ★ 128.2 (CTAF) 0	GND CON (GCO) 119.55
-----------------	-----------------------------	---------------------------------------	-------------------------



ELEV 23	D	TDZE 23
---------	----------	---------



440	2000	AWOTA	VGSI and RNAV glidepath not coincident. (VGSI Angle 3.00/TCH 63).	
YADDU		BRONG		
TEGUC 2 NM to SESOC		1600	292°	2000
SESOC		860	1600	GP 3.00° TCH 59
0.5		2 NM	2.3 NM	6.2 NM
CATEGORY	A	B	C	D
LNAV/ VNAV	DA	410-1¼	387 (400-1¼)	
LNAV	MDA	400-1	377 (400-1)	
CIRCLING	460-1 437 (500-1)	480-1 457 (500-1)	880-2½ 857 (900-2½)	880-2¾ 857 (900-2¾)

SE-3, 07 AUG 2025 to 04 SEP 2025

SE-3, 07 AUG 2025 to 04 SEP 2025