

WAAS CH <b>42724</b> <b>W24A</b>	APP CRS <b>239°</b>	Rwy Idg <b>2666</b> TDZE <b>670</b> Apt Elev <b>670</b>
--	------------------------	---

RNAV (GPS) RWY 24  
BUFFALO AIRFIELD (9G0)

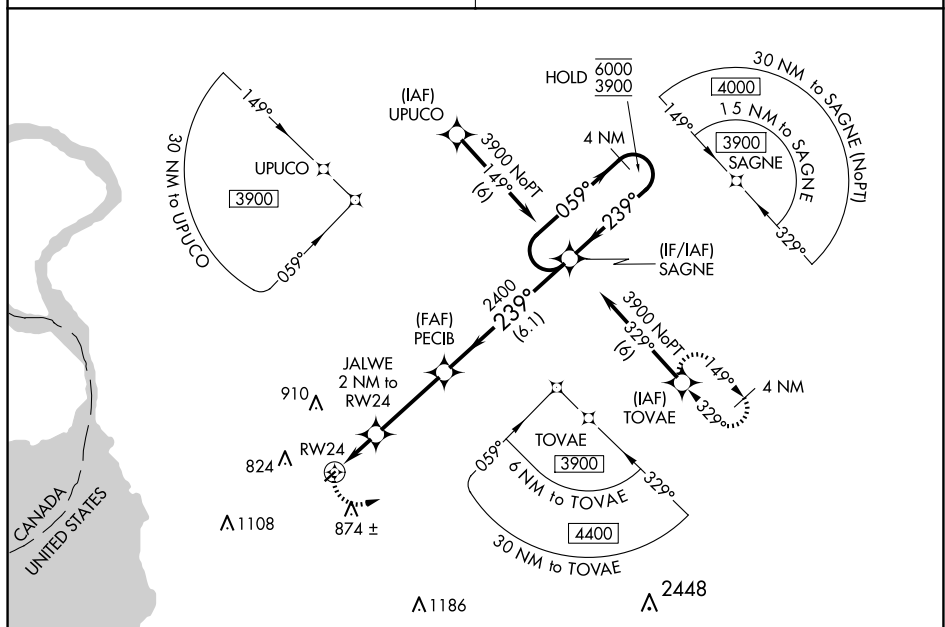
RNP APCH.

- T** Procedure NA at night. Rwy 24 helicopter visibility reduction below 1 SM NA.  
**A** NA Use Buffalo Niagara Intl altimeter setting.

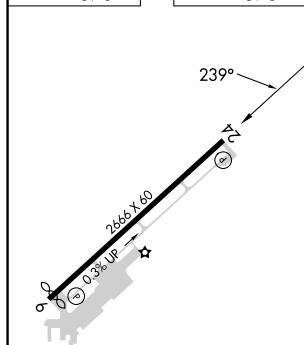
**MISSED APPROACH:** Climbing left turn to 3900 direct TOVAE and hold.

BUFFALO APP CON  
126.15 263.125



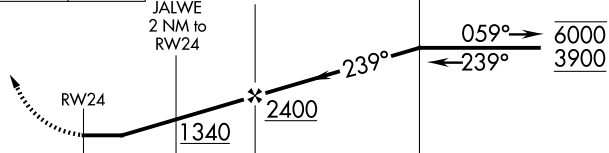
UNICOM  
122.975 (CTAF) **L**



ELEV	670		TDZE	670
------	-----	--	------	-----

REIL Rwy 6 and 24 **L**MIRL Rwy 6-24 **L**

Λ2314

<div style="display: flex; justify-content: space-around; align-items: center;"> <div style="border: 1px solid black; padding: 5px; text-align: center;">3900 </div> <div style="border: 1px solid black; padding: 5px; text-align: center;">TOVAE </div> </div>		Visual Segment - Obstacles.		4 NM Holding Pattern	
					
CATEGORY		A	B	C	D
LP MDA		1160-1	490 (500-1)	NA	
LNAV MDA		1160-1	490 (500-1)	NA	

## RNAV (GPS) RWY 24