

WAAS CH 86600 W35A	APP CRS 351°	Rwy Idg TDZE 1484 Apt Elev 1488	5002
--	------------------------	---	-------------

RNAV (GPS) RWY 35
STORM LAKE MUNI (SLB)

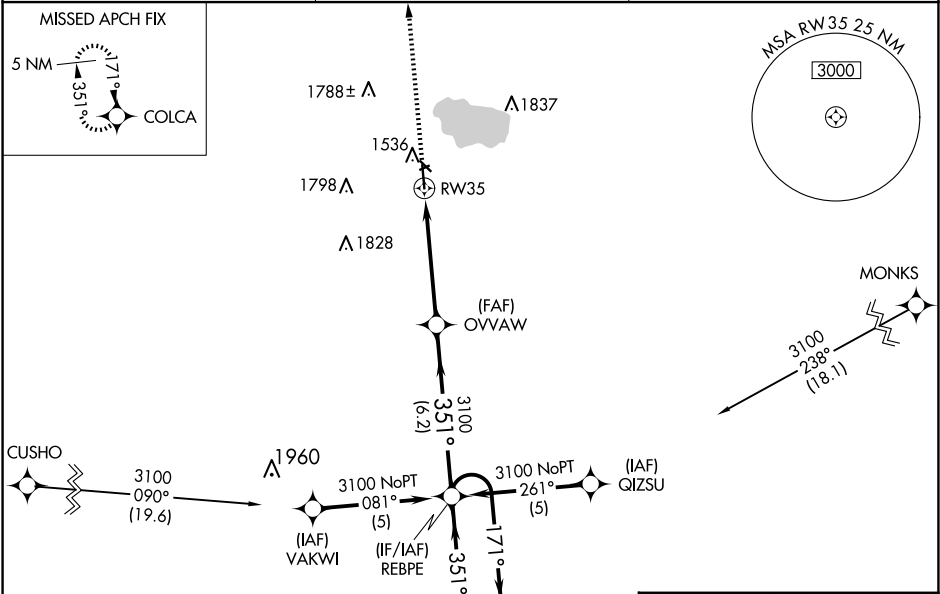
RNP APCH.

⚠

Circling NA to Rwy 6 and 24. Circling Rwy 13, 17 NA at night.
For uncompensated Baro-VNAV systems, LNAV/VNAV NA
below -17°C or above 54°C.

MISSED APPROACH: Climb to
3100 direct COLCA and hold.

AWOS-3 118.525	MINNEAPOLIS CENTER 134.0 288.3	UNICOM 122.7 (CTAF) 0
--------------------------	--	---------------------------------



3100

COLCA

*LNAV only

*1.1 NM to RW35

RW35

3100

351°

171°

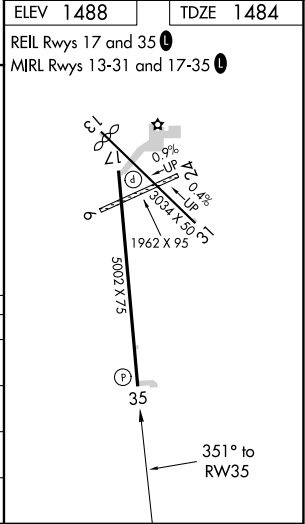
6000

3100

GP 3.00°

TCH 30

CATEGORY	A	B	C	D
LPV DA	1734-1	250 (300-1)		NA
LNAV/VNAV DA	1869-1½	385 (400-1½)		NA
LNAV MDA	1860-1	376 (400-1)		NA
CIRCLING	1920-1½ 432 (500-1½)	1940-1½ 452 (500-1½)		NA



NC-3, 07 AUG 2025 to 04 SEP 2025

NC-3, 07 AUG 2025 to 04 SEP 2025