

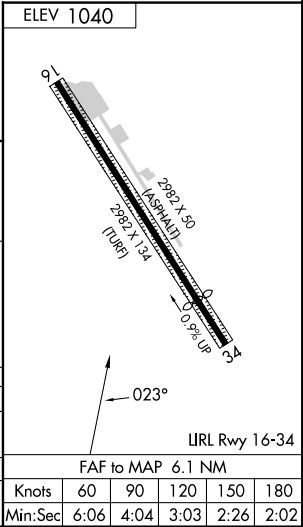
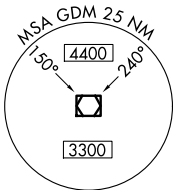
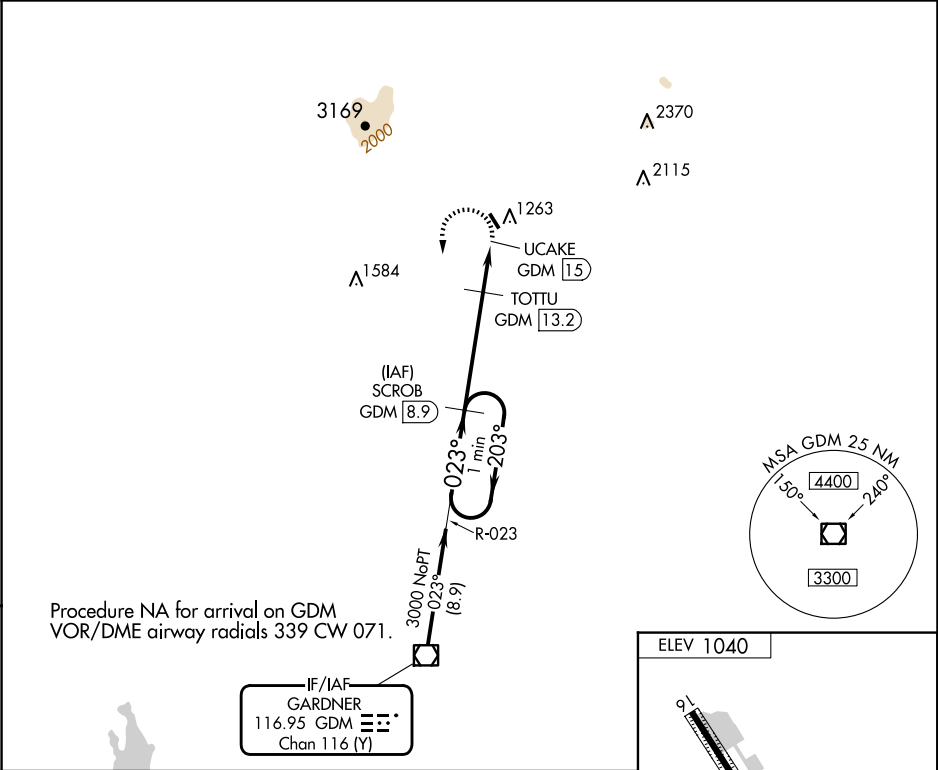
VOR/DME GDM <b>116.95</b> Chan <b>116</b> (Y)	APP CRS <b>023°</b>	Rwy Idg TDZE Apt Elev <b>1040</b>	<b>N/A</b> <b>N/A</b> <b>1040</b>
---	------------------------	---	---

VOR-A

JAFFREY AIRFIELD SILVER RANCH (A1N)

DME required.	MISSED APPROACH: Climbing left turn to 3000 on GDM VOR/DME R-023 to SCROB/GDM 8.9 DME and hold.
<div><div></div><div>When local altimeter setting not received, use KEENE altimeter setting and increase all MDA 120 feet; increase Cat B and TOTU fix minimums all Cats visibility ¼ mile. Procedure NA at night. Rwy 16 and 34 helicopter visibility reduction below 1 SM NA.</div></div>	

ASOS <b>135.875</b>	BOSTON CENTER <b>123.75 338.2</b>	UNICOM <b>122.8</b> (CTAF)
------------------------	--------------------------------------	-------------------------------



One Minute Holding Pattern		SCROB GDM [8.9]	3000 GDM R-023		SCROB GDM [8.9]
3000 ← 203° 023° → *		TOTU GDM [13.2]		UCAKE GDM [15]	
		1900			
		4.3 NM		1.8 NM	
				0.5	
CATEGORY	A	B	C	D	
CIRCLING	1900-1¼ 860 (900-1¼)		NA		
TOTU FIX MINIMUMS					
CIRCLING	1780-1 740 (800-1)	1820-1 780 (800-1)	NA		

NE-1, 07 AUG 2025 to 04 SEP 2025

NE-1, 07 AUG 2025 to 04 SEP 2025