

VOR/DME DJB	APP CRS	Rwy Idg	N/A
113.6	125°	TDZE	N/A
Chan 83		Apt Elev	758

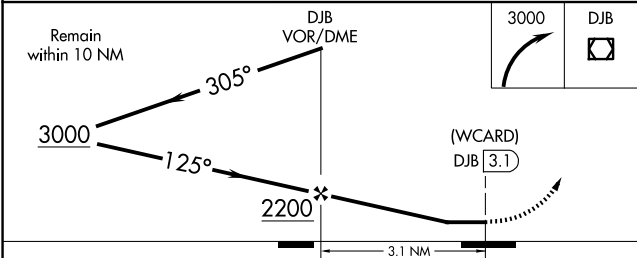
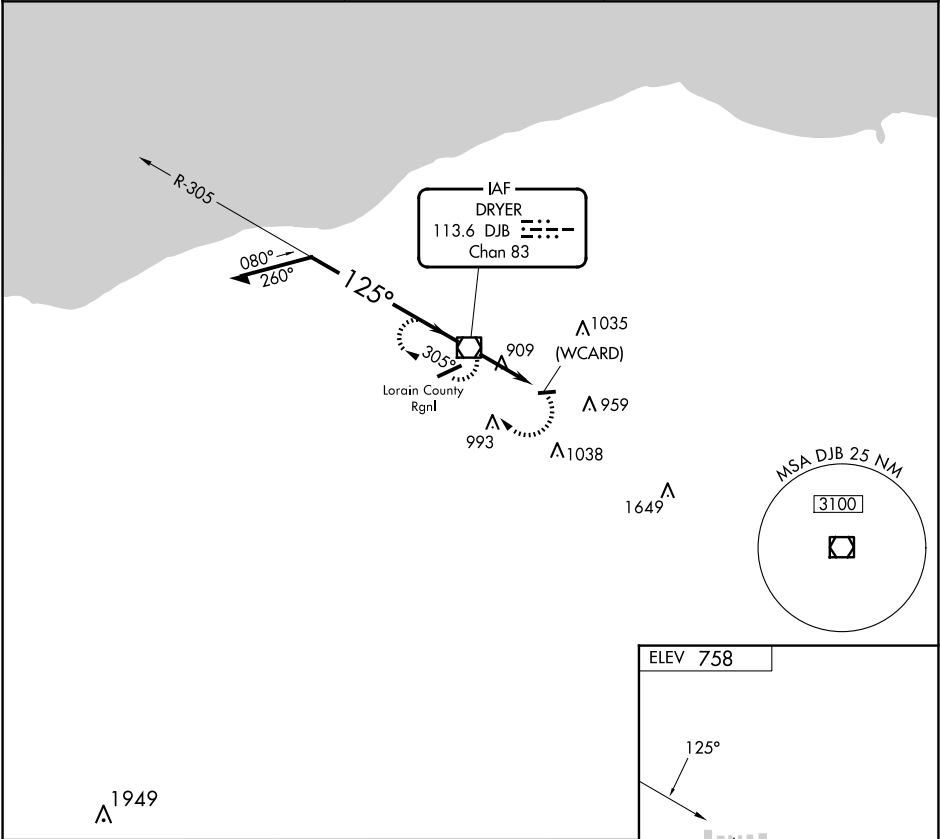
VOR or GPS-A
ELYRIA (1G1)

Use Cleveland Hopkins Intl altimeter setting.
Procedure NA at night.
Helicopter visibility reduction below 1 SM NA.

NA

MISSED APPROACH: Climbing right turn to 3000 direct DJB VOR/DME and hold.

CLEVELAND APP CON	CLNC DEL	UNICOM
125.35 346.325	125.7	122.8 (CTAF)



ELEV 758

LIRL Rwy 9-27

FAF to MAP 3.1 NM					
Knots	60	90	120	150	180
Min:Sec	3:06	2:04	1:33	1:14	1:02

CATEGORY	A	B	C	D	FAF to MAP 3.1 NM					
CIRCLING	1280-1 522 (600-1)	1320-1 562 (600-1)	1420-1¾ 662 (700-1¾)	NA	Knots	60	90	120	150	180
					Min:Sec	3:06	2:04	1:33	1:14	1:02