

WAAS
CH **78035**
W16B

APP CRS
161°

Rwy Ldg
TDZE **186**
Apt Elev **192**

RNAV (GPS) RWY 16R

MANASSAS RGNL/HARRY P DAVIS FLD (HEF)

RNP APCH - GPS.

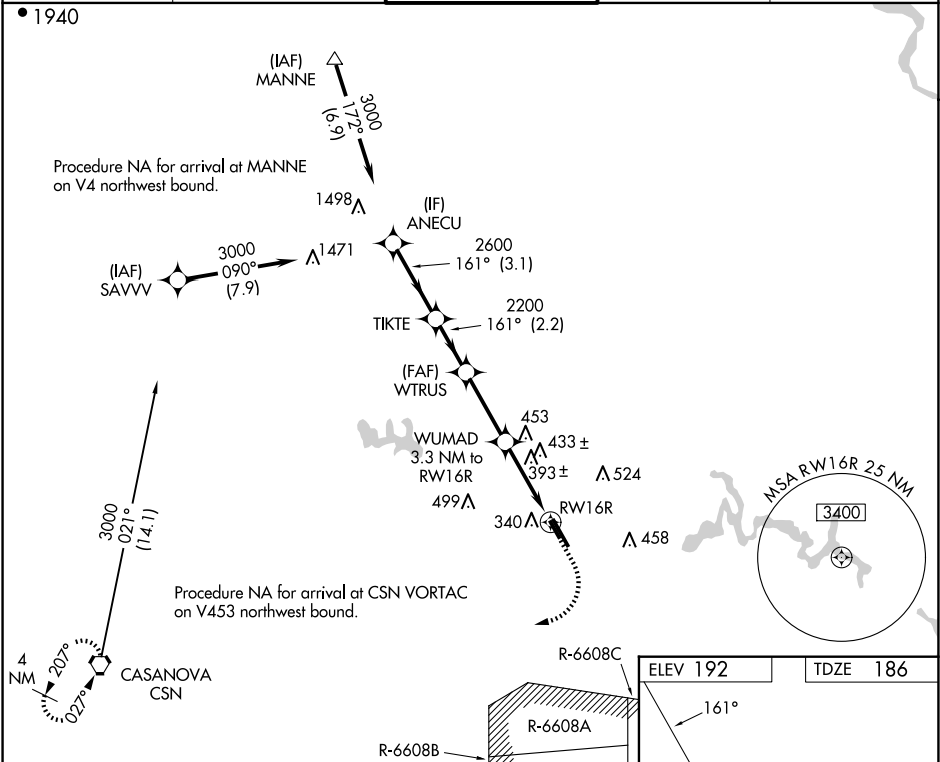
▼

Rwy 16R helicopter visibility reduction below ¾ SM NA. For uncompensated Baro-VNAV systems, LNAV/VNAV NA below -15°C or above 54°C.

MISSED APPROACH:

Climb to 700 then climbing right turn to 3000 direct CSN VORTAC and hold.

ATIS 125.175	POTOMAC APP CON 128.525 306.925	MANASSAS TOWER ★ 133.1 (CTAF) 0 360.75	GND CON 121.8	CLNC DEL 120.2
------------------------	---	--	-------------------------	--------------------------



ANECU		TIKTE		WTRUS		WUMAD	
3000		2600		2200		1280	
GP 3.00°		TCH 53					
← 3.1 NM		← 2.2 NM		← 2.9 NM		← 2 NM	
CATEGORY		A		B		C	
LPV DA				494-7/8		308 (400-7/8)	
LNAV/VNAV DA				675-1 3/8		489 (500-1 3/8)	
LNAV MDA		660-1		474 (500-1)		660-1 3/8	
						474 (500-1 3/8)	
CIRCLING		720-1		740-1		840-1 3/4	
		528 (600-1)		548 (600-1)		648 (700-1 3/4)	
						880-2 1/4	
						688 (700-2 1/4)	

ELEV 192

TDZE 186