

WAAS

CH 81812

W05A

APP CRS

051°

Rwy Idg

6001

TDZE

726

Apt Elev

728

RNAV (GPS) RWY 5

WAUKEGAN NTL (UGN)

RNP APCH - GPS.

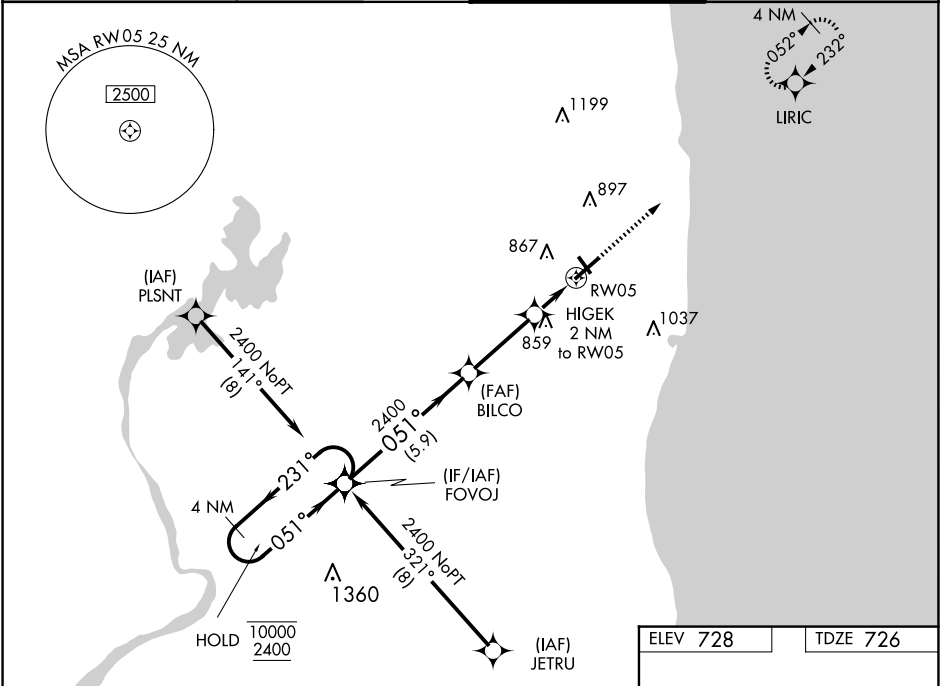
▼

▲

Rwy 5 helicopter visibility reduction below ¾ SM NA. For uncompensated Baro-VNAV systems, LNAV/VNAV NA below -16°C or above 54°C. Circling Rwy 14, 32 NA at night.

MISSED APPROACH: Climb to 2300 direct LIRIC and hold.

ATIS 132.4	CHICAGO APP CON 120.55	WAUKEGAN TOWER ★ 120.05(CTAF) 273.55	GND CON 121.65
---------------	---------------------------	---	-------------------



4 NM Holding Pattern		VGSI and RNAV glidepath not coincident (VGSI Angle 3.00/TCH 35).		2300	LIRIC
FOVOJ		BILCO	HIGEK 2 NM to RW05	1.1 NM to RW05	RW05
10000 2400		2400	1400	0.9 NM	1.1 NM
GP 3.00° TCH 40		5.9 NM	3.1 NM	0.9 NM	1.1 NM
CATEGORY	A	B	C	D	
LPV DA	976-¾		250 (300-¾)		
LNAV/VNAV DA	1013-7/8		287 (300-7/8)		
LNAV MDA	1120-1	394 (400-1)	1120-1½	394 (400-1½)	
CIRCLING	1220-1	492 (500-1)	1220-1½ 492 (500-1½)	1400-2¼ 672 (700-2¼)	