

LOC/DME I-CCR 108.5 Chan 22	APP CRS 185°	Rwy Ldg 4400 TDZE 22 Apt Elev 26
---	------------------------	---

LDA RWY 19R

BUCHANAN FLD (CCR)

DME required.

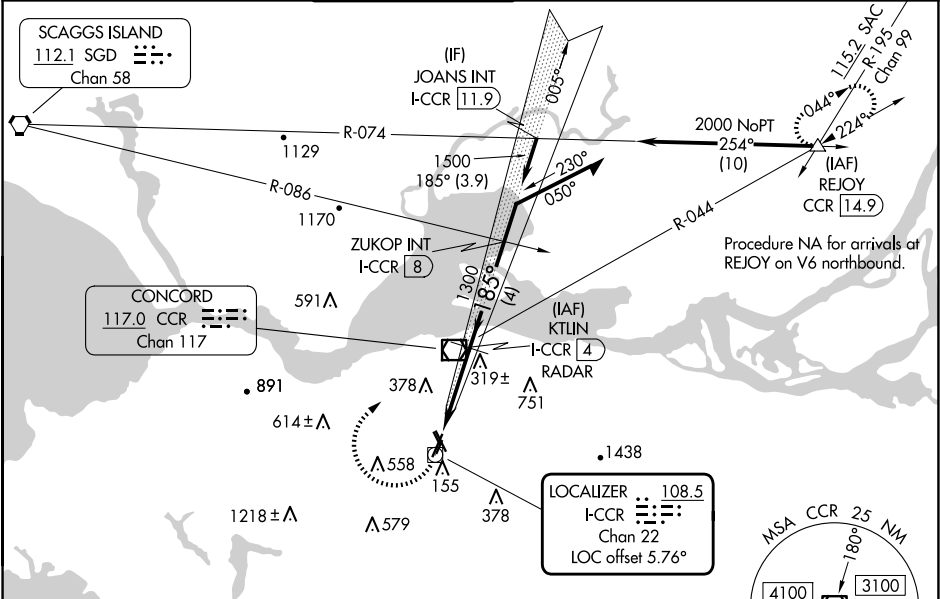
▼ Circling NA west of Rwy 1L-19R. Circling Rwy 1L, 1R, 19L, 32L, 32R

▲ NA at night. Rwy 19R helicopter visibility reduction below ¾ SM NA.
For inop ALS, increase S-19R Cats C/D visibility to 2 SM.
*For inop ALS, increase S-19R Cats C/D visibility to 1½ SM.

MALS

MISSED APPROACH: Climbing right turn to 3000 direct CCR VOR/DME then on CCR VOR/DME R-044 to REJOY/CCR 14.9 DME and hold.
*Missed approach requires minimum climb of 282 feet per NM to 1800.

ATIS 124.7	TRAVIS APP CON 119.9 322.325	CONCORD TOWER* 119.7 (CTAF) 257.8	GND CON 121.9	CLNC DEL 118.025	UNICOM 122.95
----------------------	--	---	-------------------------	----------------------------	-------------------------



ELEV 26	D	TDZE 22
---------	----------	---------

HIRL Rwy 1L-19R
REIL Rwy 1L and 32R
MIRL Rwy 14L-32R

185°

FAF to MAP 3.4 NM

Knots	60	90	120	150	180
Min:Sec	3:24	2:16	1:42	1:22	1:08

3000	CCR	CCR R-044	REJOY	KTUN I-CCR 4 RADAR	VGSI and descent angles not coincident (VGSI Angle 3.00/TCH 22).
------	-----	-----------	-------	--------------------	--

005°

2600

185°

1300

1.2 NM

2.2 NM

Use I-CCR DME when on the localizer course.

CATEGORY	A	B	C	D
S-19R*	440-¾ 418 (500-¾)		440-1 418 (500-1)	
S-19R	780-¾ 758 (800-¾)	780-1 758 (800-1)	780-1½ 758 (800-1½)	
CIRCLING	780-1 754 (800-1)	780-1¼ 754 (800-1¼)	960-2¾ 934 (1000-2¾)	1300-3 1274 (1300-3)