

WAAS CH <b>53304</b> <b>W01A</b>	APP CRS <b>010°</b>	Rwy Idg <b>5010</b> TDZE <b>979</b> Apt Elev <b>979</b>
--	------------------------	---

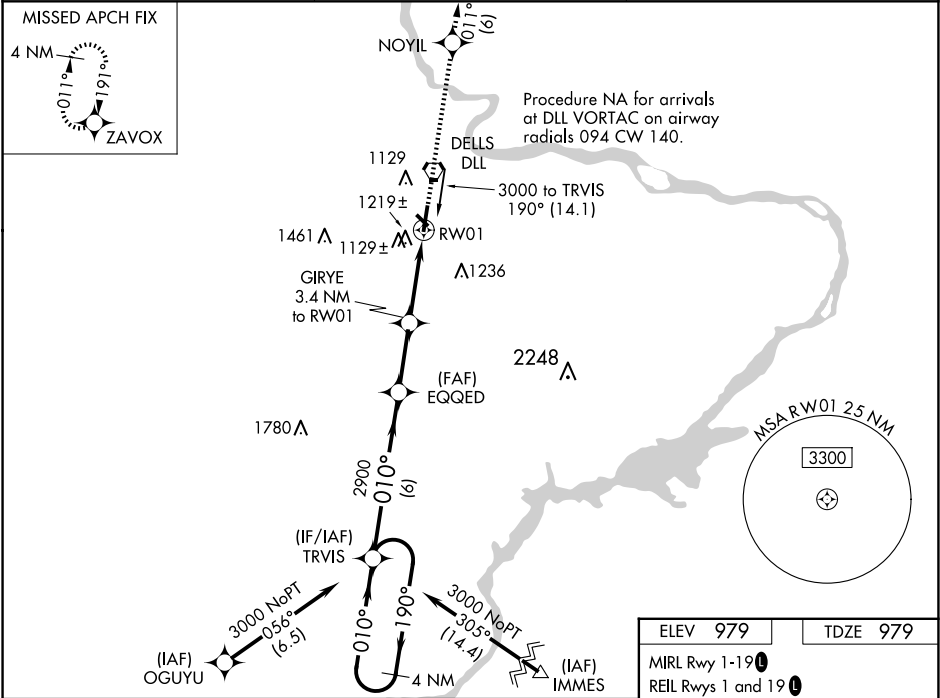
RNAV (GPS) RWY 1

BARABOO/WISCONSIN DELLS RGNL (DLL)

Baro-VNAV NA when using Lone Rock altimeter setting. For uncompensated Baro-VNAV systems, LNAV/VNAV NA below -22°C (-7°F) or above 54°C (130°F). DME/DME RNP-0.3 NA. When local altimeter setting not received, use Lone Rock altimeter setting and increase all DA 97 feet/MDA 100 feet. Increase LPV all Cats visibility ½ mile, LNAV/VNAV all Cats visibility ¾ mile, LNAV Cat C visibility ¾ mile, and Circling Cat C visibility ½ mile. Circling NA to Rwy 14-32. Rwy 1 helicopter visibility reduction below ¾ SM NA.

MISSED APPROACH:  
Climb to 3000 direct  
NOYIL and on track  
011° to ZAVOX and  
hold.

AWOS-3 <b>118.325</b>	MADISON APP CON★ <b>135.45 343.7</b>	UNICOM <b>123.05 (CTAF)</b>
--------------------------	---	--------------------------------



VGSI and RNAV glidepath not coincident (VGSI Angle 3.00/TCH 32).				
4 NM Holding Pattern	TRVIS	EQGED	GIRYE 3.4 NM to RW01	ZAVOX
3000	190°	010°	2900	010°
GP 3.00° TCH 40			*2080	
	6 NM	2.5 NM	3.4 NM	
CATEGORY	A	B	C	D
LPV DA	1229-1 250 (300-1)			NA
LNAV/ VNAV DA	1391-1¾ 412 (500-1¾)			NA
LNAV MDA	1480-1 501 (600-1)		1480-1¾ 501 (600-1¾)	NA
CIRCLING	1520-1 541 (600-1)		1580-1¾ 601 (700-1¾)	NA

