

WAAS CH 70521 W30A	APP CRS 302°	Rwy Ldg 7002 TDZE 411 Apt Elev 413
--	------------------------	---

RNAV (GPS) RWY 30L

ST LOUIS DOWNTOWN (CPS)

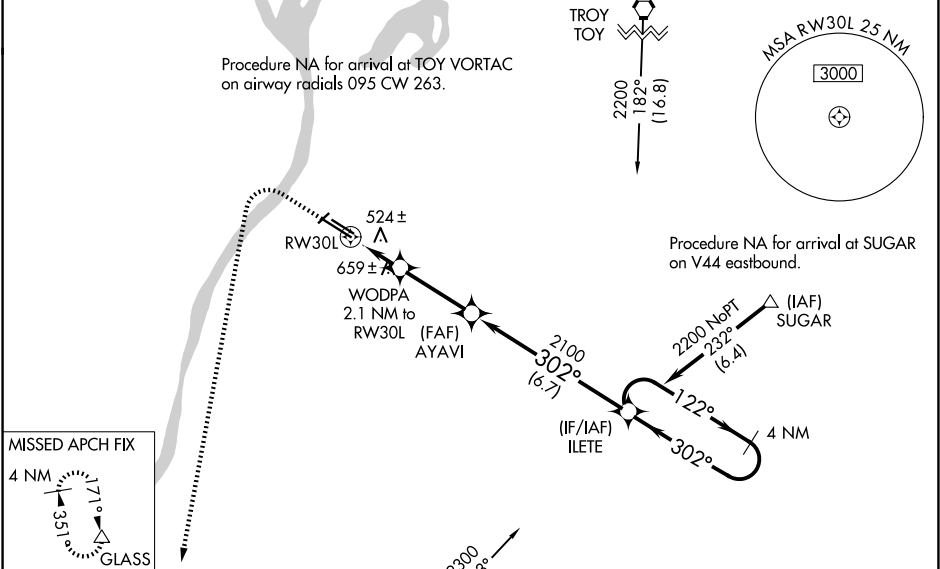
⚠ DME/DME RNP-0.3 NA. When local altimeter setting not received, use St Louis Lambert Intl altimeter setting and increase LPV DA to 674 feet, LNAV/VNAV DA to 890 feet, and all MDA 80 feet; increase LNAV/VNAV all Cats visibility ¼ SM, LNAV Cats C/D visibility ⅜ SM, and Circling Cat C visibility ¼ SM. VDP and Baro-VNAV NA with St Louis Lambert Intl altimeter setting. For uncompensated Baro-VNAV systems, LNAV/VNAV NA below -15°C (5°F) or above 41°C (105°F). When using St Louis Lambert Intl altimeter setting; for inop MALS, increase LPV all Cats visibility to ⅜ mile and LNAV Cats C/D visibility to 1 ⅜ mile. Night landing: Rwy 5 NA.

MALS

AS

MISSED APPROACH:
Climb to 1000 then climbing left turn to 3000 direct GLASS and hold.

ATIS 121.45	ST LOUIS APP CON 123.7 371.875	DOWNTOWN TOWER ★ 119.925 (CTAF) 0 379.3	GND CON 121.8	CLNC DEL 118.275	CLNC DEL 121.8 (When twr closed)	UNICOM 122.95
-----------------------	--	---	-------------------------	----------------------------	---	-------------------------



ELEV 413	D	TDZE 411
----------	---	----------

HIRL Rwy 12R-30L
REIL Rwy 12L and 12R
REIL Rwy 30R
MIRL Rwy 5-23 and 12L-30R

GLASS		GLASS		GLASS		GLASS	
1000		3000					
*LNAV only		WODPA 2.1 NM to RW30L		AYAVI 2100		ILETE 4 NM Holding Pattern	
RW30L		*1.5 NM to RW30L		1120*		122° → 2200 ← 302°	
				2100		GP 3.00° TCH 55°	
CATEGORY		A		B		C	
LPV DA				611-½		200 (200-½)	
LNAV/VNAV DA				827-⅞		416 (500-⅞)	
LNAV MDA		940-½		529 (600-½)		940-1	
						529 (600-1)	
CIRCLING		940-1		1120-1		1240-2½	
		527 (600-1)		707 (800-1)		827 (900-2½)	
						1380-3	
						967 (1000-3)	