

(GATWY1.TWILA) 24025
GATEWAY ONE DEPARTURE

AL-5316 (FAA)

ST LOUIS DOWNTOWN (CPS)
CAHOKIA/ST. LOUIS, ILLINOIS

EC-3, 07 AUG 2025 to 04 SEP 2025

TOP ALTITUDE:
ASSIGNED BY ATC

TAKEOFF MINIMUMS

Rwys 12L/R, 23, 30R: Standard.

Rwy 5: 200-1/4 or standard with minimum climb of 343' per NM to 700.

Rwy 30L: 400-2 1/2 or standard with minimum climb of 220' per NM to 900,

or alternatively, with standard takeoff minimums and a normal 200'

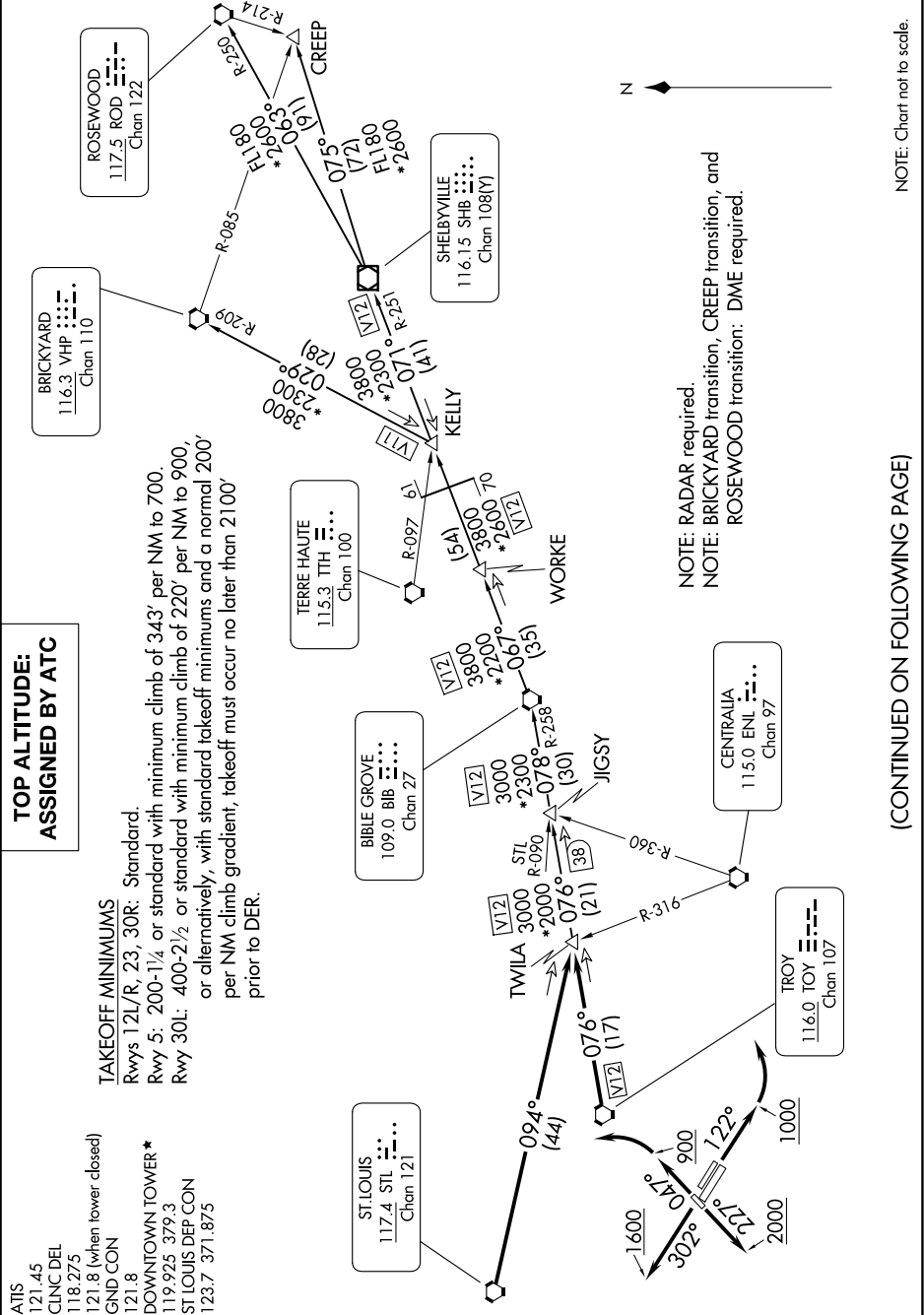
per NM climb gradient, takeoff must occur no later than 2100'

prior to DER.

ATIS 121.45
CLNC DEL 118.275
GND CON 121.8 (when tower closed)
DOWNTOWN TOWER * 119.925 379.3
ST LOUIS DEP CON 123.7 371.875

GATEWAY ONE DEPARTURE
(GATWY1.TWILA) 08NOV18

CAHOKIA/ST. LOUIS, ILLINOIS
ST LOUIS DOWNTOWN (CPS)



(CONTINUED ON FOLLOWING PAGE)

NOTE: Chart not to scale.

EC-3, 07 AUG 2025 to 04 SEP 2025