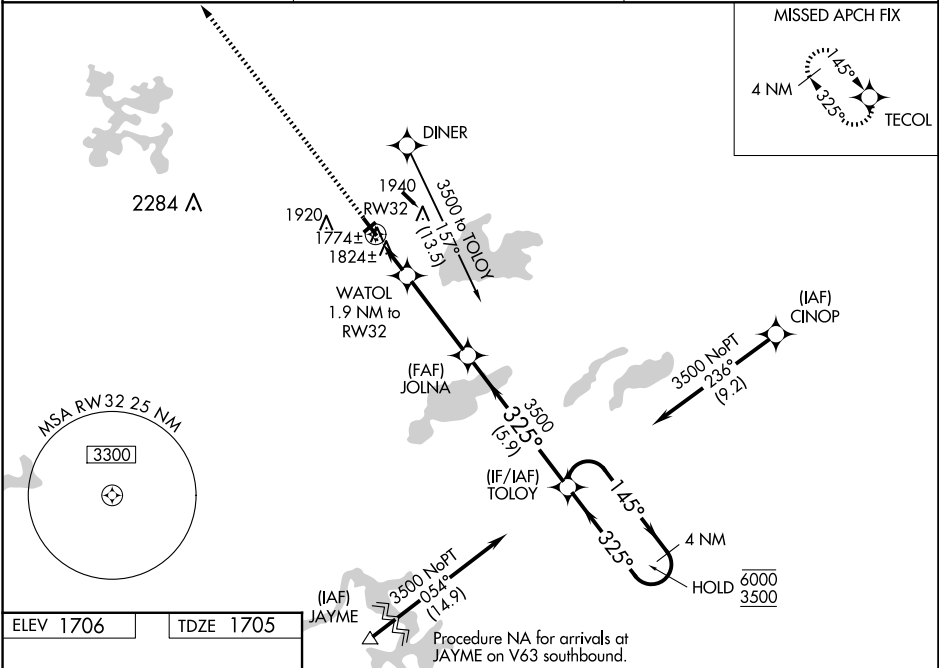


WAAS CH <b>97744</b> <b>W32A</b>	APP CRS <b>325°</b>	Rwy Ldg TDZE Apt Elev	<b>3601</b> <b>1705</b> <b>1706</b>
--	------------------------	-----------------------------	---

RNAV (GPS) RWY 32  
KINGS LAND O' LAKES (LNL)

RNP APCH - GPS.	MISSED APPROACH: Climb to 3500 direct TECOL and hold.
<div><div></div><div></div></div> <div>Circling NA to Rwy 5 and 23. Rwy 32 helicopter visibility reduction below ¾ SM NA. For uncompensated Baro-VNAV systems, LNAV/VNAV NA below -18°C or above 54°C.</div>	

AWOS-3 <b>119.525</b>	MINNEAPOLIS CENTER <b>133.65 281.5</b>	UNICOM <b>122.8 (CTAF) 0</b>
--------------------------	---	---------------------------------



ELEV 1706	TDZE 1705	Procedure NA for arrivals at JAYME on V63 southbound.			
<div><div></div><div></div></div>		TECOL			
<div><div></div><div></div></div>		JOLNA 3500			
<div><div></div><div></div></div>		WATOL 1.9 NM to RW32			
<div><div></div><div></div></div>		RW32 1.1 NM to RW32			
<div><div></div><div></div></div>		TOLOY 4 NM Holding Pattern			
<div><div></div><div></div></div>		GP 3.00° TCH 40			
<div><div></div><div></div></div>		CATEGORY			
<div><div></div><div></div></div>		LPV DA			
<div><div></div><div></div></div>		LNAV/VNAV DA			
<div><div></div><div></div></div>		LNAV MDA			
<div><div></div><div></div></div>		CIRCLING			