

WAAS CH 86738 W07A	APP CRS 075°	Rwy Ldg TDZE Apt Elev 8 8	3502
--	------------------------	---	-------------

RNAV (GPS) RWY 7
PROVINCETOWN MUNI (PVC)

RNP APCH - GPS.

▼

Baro-VNAV and VDP NA when using HYA altimeter setting. Circling Rwy 25 NA at night. For uncompensated Baro-VNAV systems, LNAV/VNAV NA below -1.5°C or above 54°C. Inop table does not apply to LPV. For inop ALS when using HYA altimeter setting, increase LPV and LNAV/VNAV all Cnts visibility to ½ SM. When local altimeter setting not received, use HYA altimeter setting: increase LPV DA to 271 feet, increase LNAV/VNAV DA to 331 feet; increase all MDA 80 feet.

MALSF

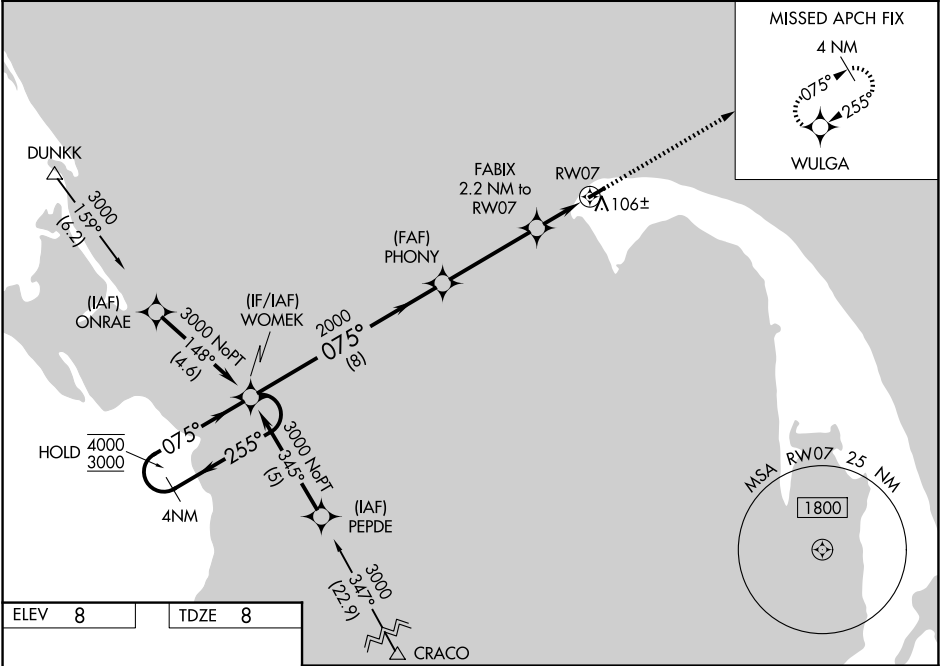
☼

☼

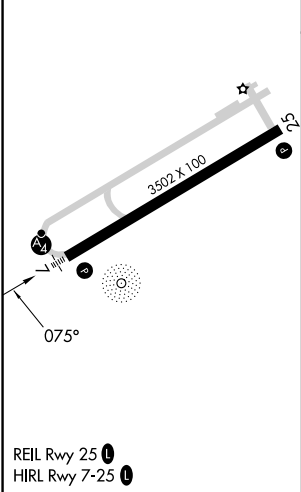
☼

MISSED APPROACH:
Climb to 3000 direct WULGA and hold.

AWOS-3PT 119.275	BOSTON APP CON 118.2	CLNC DEL 120.65	UNICOM 122.8 (CTAF)	122.85 0
----------------------------	--------------------------------	---------------------------	-------------------------------	------------------------



ELEV 8	TDZE 8
---------------	---------------



4 NM Holding Pattern		WOMEK		PHONY		FABIX		RW07	
4000 ← 255°		3000 → 075°		2000		740		1 NM to RW07	
GP 3.00°		TCH 40		8 NM		3.9 NM		1.2 NM	
CATEGORY		A		B		C		D	
LPV		DA		208-¾		200 (200-¾)		NA	
LNAV/VNAV		DA		268-¾		260 (300-¾)		NA	
LNAV		MDA		360-¾		352 (400-¾)		NA	
CIRCLING		460-1		452 (500-1)		660-1		652 (700-1)	
								NA	

NE-1, 07 AUG 2025 to 04 SEP 2025

NE-1, 07 AUG 2025 to 04 SEP 2025