

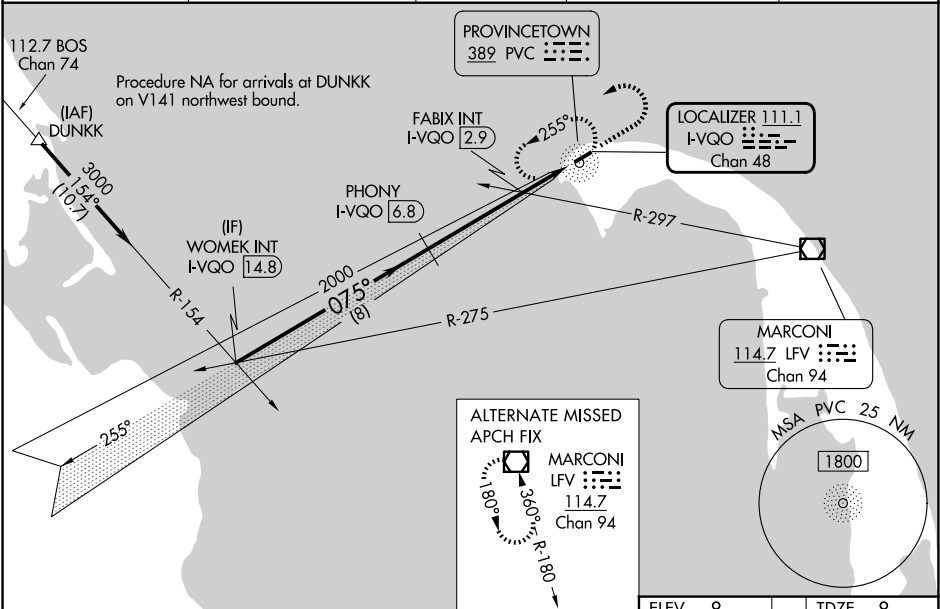
LOC/DME I-VQO	APP CRS	Rwy Ldg	3502
111.1	075°	TDZE	8
Chan 48		Apt Elev	8

ILS or LOC RWY 7




PROVINCETOWN MUNI (PVC)

ADF required. DME required for LOC only.	MALSF	MISSED APPROACH: Climb to 800 then climbing left turn to 2000 direct PVC NDB and hold, continue climb-in-hold to 2000.
<div><div>NA</div><div>Circling Rwy 25 NA at night. VDP NA when using HYA altimeter setting. Inop table does not apply to S-ILS 7. For inop ALS when using HYA altimeter setting, increase S-ILS 7 all Cats visibility to ¾ SM. When local altimeter setting not received, use HYA altimeter setting and increase all S-ILS 7 to 271 feet and all MDA 80 feet.</div></div>	<div><div></div><div></div></div>	

AWOS-3PT	BOSTON APP CON	CLNC DEL	UNICOM	
119.275	118.2	120.65	122.8 (CTAF)	122.85



	WOMEK INT I-VQO 14.8	PHONY I-VQO 6.8	FABIX INT I-VQO 2.9	I-VQO 1.5	I-VQO 0.7
	3000	2000	2000	2000	2000
	075°	075°	075°	075°	075°
	8 NM	3.9 NM	1.3 NM	0.9 NM	
CATEGORY	A	B	C	D	
S-ILS 7	208-¾	200 (200-¾)	NA		
S-LOC 7	660-¾	652 (700-¾)	NA		
CIRCLING	660-1	652 (700-1)	NA		
FABIX FIX MINIMUMS (DUAL VOR RECEIVERS OR DME REQUIRED)					
S-LOC 7	320-¾	312 (400-¾)	NA		
CIRCLING	460-1	660-1	NA		
	452 (500-1)	652 (700-1)			

ELEV	8	TDZE	8		
					
REIL Rwy 25 					
HIRL Rwy 7-25 					
FAF to MAP 6.1 NM					
Knots	60	90	120	150	180
Min:Sec	6:06	4:04	3:03	2:26	2:02