

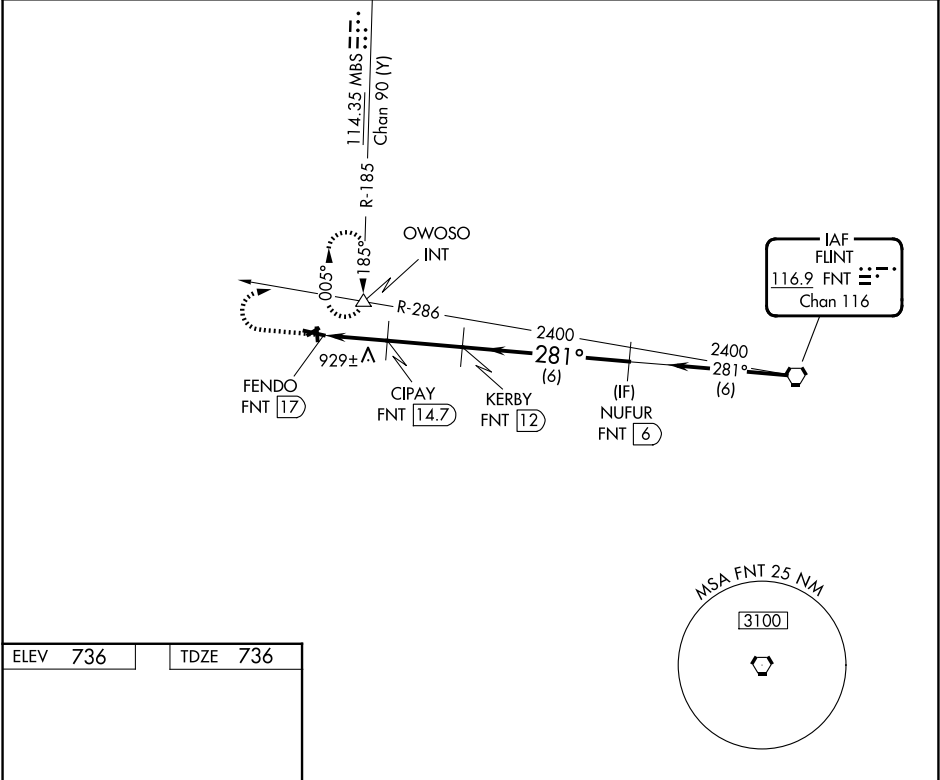
VORTAC FNT	APP CRS	Rwy Ldg
116.9	281°	4300
Chan 116	TDZE	736
	Apt Elev	736

VOR/DME RWY 29
OWOSSO COMMUNITY (RNP)

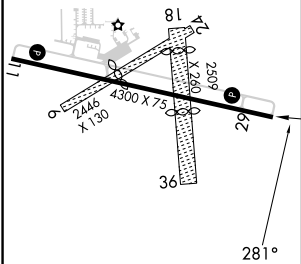
▼ Circling NA to Rwy 6, 18, 24 and 36. Rwy 29 helicopter visibility reduction below ¾ SM NA. When local altimeter setting not received, use Flint altimeter setting and increase all MDA 60 feet and S-29 Cat C visibility ¼ mile.

MISSED APPROACH: Climb to 1900 then climbing right turn to 2700 via FNT VORTAC R-286 to OWOSSO INT and hold.

AWOS-3 118.025	GREAT LAKES APP CON ★ 128.55 257.9	UNICOM 123.0 (CTAF) 0
-------------------	---------------------------------------	--------------------------



ELEV 736	TDZE 736
----------	----------



REIL Rwy 11 and 29 0
MIRL Rwy 11-29 0

1900	2700	OWOSSO	VGSI and descent angles not coincident (VGSI Angle 3.00/TCH 40).	
↑	FNT R-286	△	KERBY FNT 12	NUFUR FNT 6
FENDO FNT 17		CIPAY FNT 14.7	2400	281° 2400
1500		≤ 3.07° TCH 40	Procedure Turn NA	
2.3 NM		2.7 NM	6 NM	
CATEGORY	A	B	C	D
S-29	1180-1	444 (500-1)	1180-1¼ 444 (500-1¼)	NA
CIRCLING	1220-1 483 (500-1)	1260-1 523 (600-1)	1400-1¾ 663 (700-1¾)	NA