

OWOSSO, MICHIGAN

AL-5312 (FAA)

25219

APP CRS	Rwy Ldg	4300
289°	TDZE	737
	Apt Elev	737

RNAV (GPS) RWY 29

OWOSSO COMMUNITY (RNP)

RNP APCH.

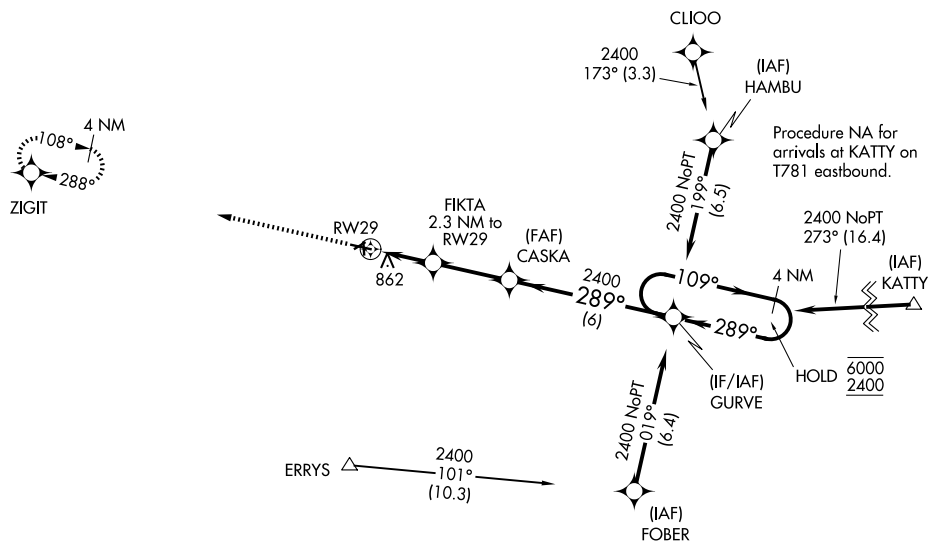
T Circling NA to Rwy 6, 18, 24 and 36. Procedure NA at night. Rwy 29 helicopter
A visibility reduction below $\frac{3}{4}$ SM NA.

MISSED APPROACH: Climb to 2600
direct ZIGIT and hold.

AWOS-3
118.025

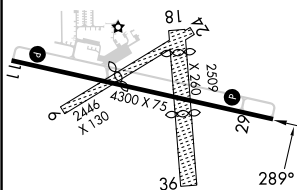
GREAT LAKES APP CON ★
128.55 257.9

UNICOM
123.0 (CTAF) **L**



EC-1, 07 AUG 2025 to 04 SEP 2025

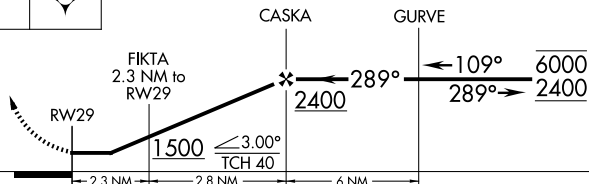
ELEV 737		TDZE 737
----------	--	----------



26C
↑



VGSI and descent angles not coincident (VGSI Angle 3.00/TCH 40).

4 NM
Holding Pattern

CATEGORY	A	B	C	D
INAV MDA	1120-1	383 (400-1)	1120-1 $\frac{1}{8}$ 383 (400-1 $\frac{1}{8}$)	NA
CIRCLING	1220-1 483 (500-1)	1260-1 523 (600-1)	1400-1 $\frac{3}{4}$ 663 (700-1 $\frac{3}{4}$)	NA

REIL Rwy 11 and 29 **L**
MIRL Rwy 11-29 **L**

OWOSSO, MICHIGAN

Amdt 2 15AUG19

OWOSSO COMMUNITY (RNP)

RNAV (GPS) RWY 29

43°00'N-84°08'W