

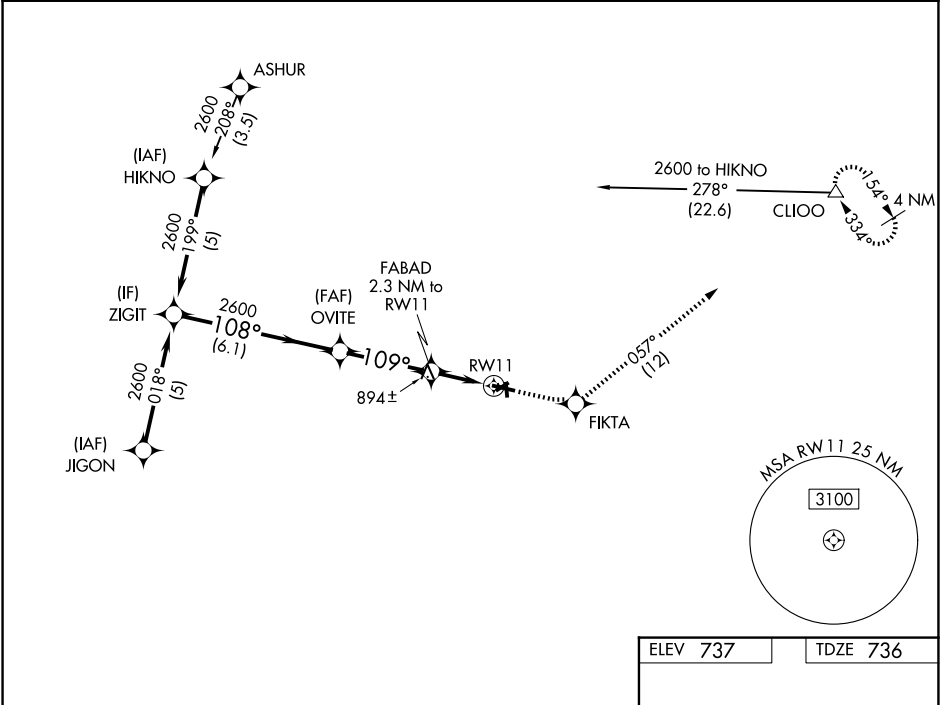
WAAS CH 50209 W11A	APP CRS 109°	Rwy Ldg TDZE Apt Elev	4300 736 737
--	------------------------	-----------------------------	---

RNAV (GPS) RWY 11

OWOSSO COMMUNITY (RNP)

RNP APCH.	MISSED APPROACH: Climb to 3000 direct FIKTA and on track 057° to CLIOO and hold.
Circling NA to Rwys 6, 18, 24, and 36. For uncompensated Baro-VNAV systems, LNAV/VNAV NA below -16°C (4°F) or above 54°C (130°F). Rwy 11 helicopter visibility reduction below ¾ SM NA.	

AWOS-3 118.025	GREAT LAKES APP CON * 128.55 257.9	UNICOM 123.0 (CTAF) 0
--------------------------	--	---------------------------------



VGSI and RNAV glidepath not coincident (VGSI Angle 3.00/TCH 40).				
ZIGIT		OVITE		FIKTA
2600		2600		3000
108°		109°		tr 057°
GP 3.00° TCH 40		*1500		CLIOO
6.1 NM		3.4 NM		
		2.3 NM		
CATEGORY	A	B	C	D
LPV DA	1079-1¼	343 (400-1¼)		NA
LNAV/VNAV DA	1258-2	522 (600-2)		NA
LNAV MDA	1180-1	444 (500-1)	1180-1¼ 444 (500-1¼)	NA
CIRCLING	1220-1 483 (500-1)	1260-1 523 (600-1)	1400-1¾ 663 (700-1¾)	NA

