

LOC I-CKV
111.7

APP CRS
347°

Rwy Ldg
TDZE
Apt Elev
5999
550
550

LOC RWY 35
OUTLAW FLD (CKV)

ADF required.
RADAR required.

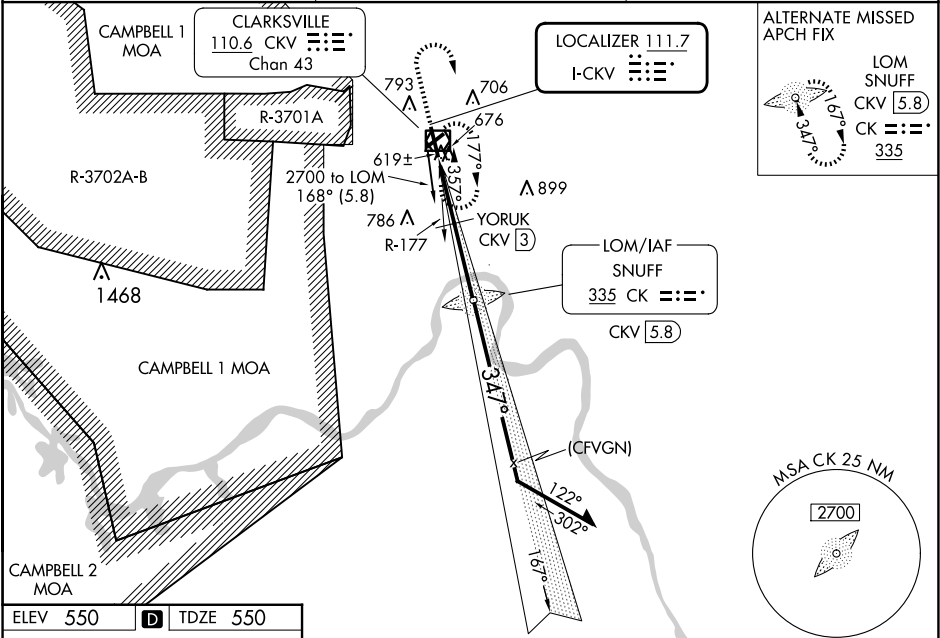
MALS

MISSED APPROACH:
Climb to 1800 then
climbing right turn to
2200 direct CKV
VOR/DME and hold.

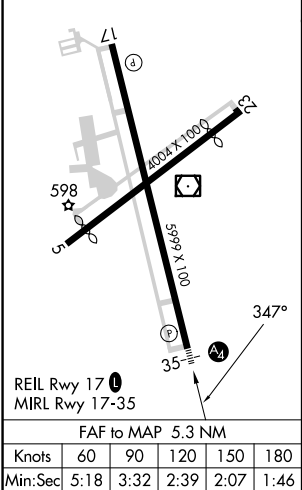
▼
NA

Rwy 35 helicopter visibility reduction below ¾ SM NA. Circling Rwy 17, 23
NA at night. When local altimeter setting not received, use HOP altimeter setting.
Circling NA west of Rwy 17-35. *DME from CKV VOR/DME.

ASOS 134.575	CAMPBELL APP CON 134.35 307.025	UNICOM 122.8 (CTAF) 0
------------------------	---	---------------------------------



ELEV 550	D	TDZE 550
----------	---	----------



1800	2200	CKV	CK LOM SNUFF CKV [5.8]	VGSI and descent angles not coincident (VGSI Angle 3.00/TCH 54).
↑	↷	☐		
		YORUK CKV [3]	167°	Remain within 10 NM
		CKV [0.5]	3.01° TCH 50	2700
		1080	2300	
		2.5 NM	2.8 NM	
CATEGORY	A	B	C	D
S-LOC 35	1080-¾	530 (600-¾)	1080-1¼	530 (600-1¼)
CIRCLING	1080-1	530 (600-1)	1080-1½ 530 (600-1½)	1200-2 650 (700-2)
YORUK FIX MINIMUMS * (DME REQUIRED)				
S-LOC 35	880-¾	330 (400-¾)		
CIRCLING	1000-1 450 (500-1)	1020-1 470 (500-1)	1020-1½ 470 (500-1½)	1200-2 650 (700-2)

SE-1, 07 AUG 2025 to 04 SEP 2025

SE-1, 07 AUG 2025 to 04 SEP 2025