

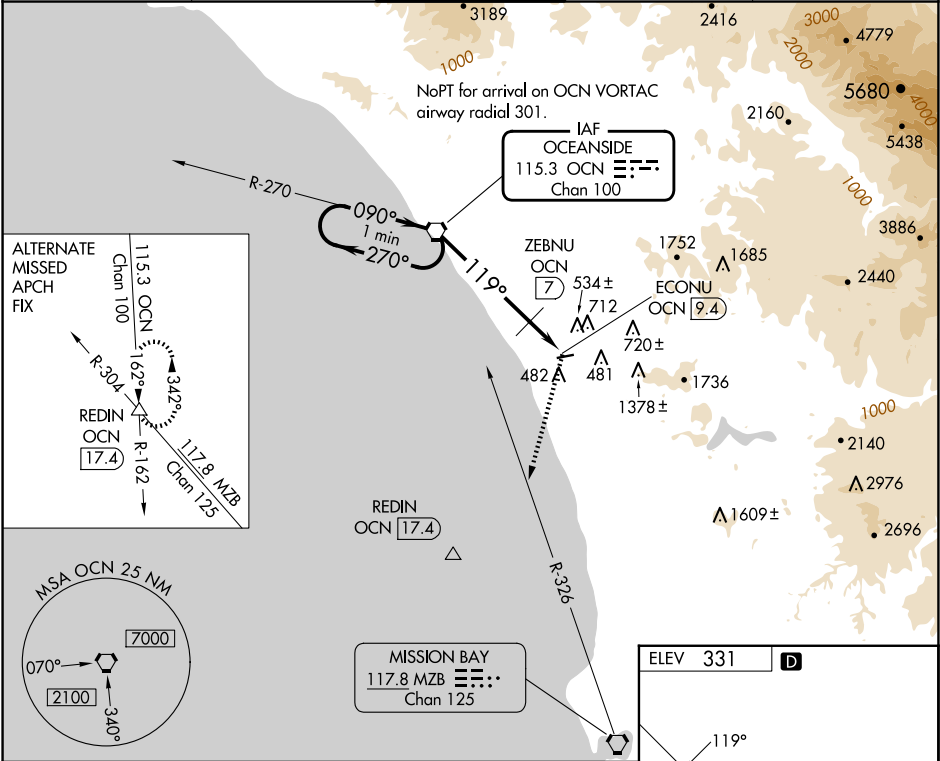
VORTAC OCN 115.3 Chan 100	APP CRS 119°	Rwy Ldg TDZE Apt Elev 331	N/A N/A 331
---	------------------------	---	--------------------------

VOR-A

MC CLELLAN-PALOMAR (CRQ)

MISSED APPROACH: Climb to 3000 on heading 180° and on MZB R-326 to MZB VORTAC.

ATIS 120.15	SOCAL APP CON 127.3 323.0	PALOMAR TOWER★ 118.6 (CTAF) 0 276.4	GND CON 121.8	CLNC DEL 134.85
-----------------------	-------------------------------------	---	-------------------------	---------------------------



One Minute Holding Pattern		OCN VORTAC	3000	MZB R-326	MZB
			hdg 180°		
			270°	119°	
			090°		
			1300		
			7 NM	2.4 NM	
CATEGORY	A	B	C	D	
CIRCLING	1300-1¼ 969 (1000-1¼)	1300-1½ 969 (1000-1½)	1300-3 969 (1000-3)	NA	
ZEBNU FIX MINIMUMS					
CIRCLING	920-1 589 (600-1)	1020-1 689 (700-1)	1260-2¾ 929 (1000-2¾)	NA	

ELEV 331	D
119°	
4897 X 1.50	
TWR	
HIRL Rwy 6-24 1	
FAF to MAP 9.4 NM	
Knots	60 90 120 150 180
Min:Sec	9:24 6:16 4:42 3:46 3:08