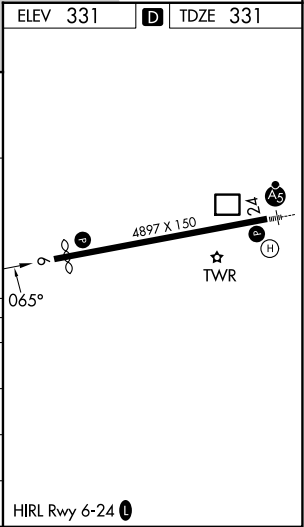
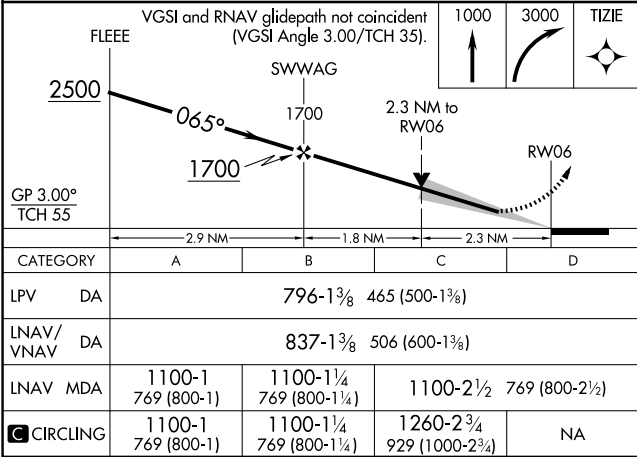
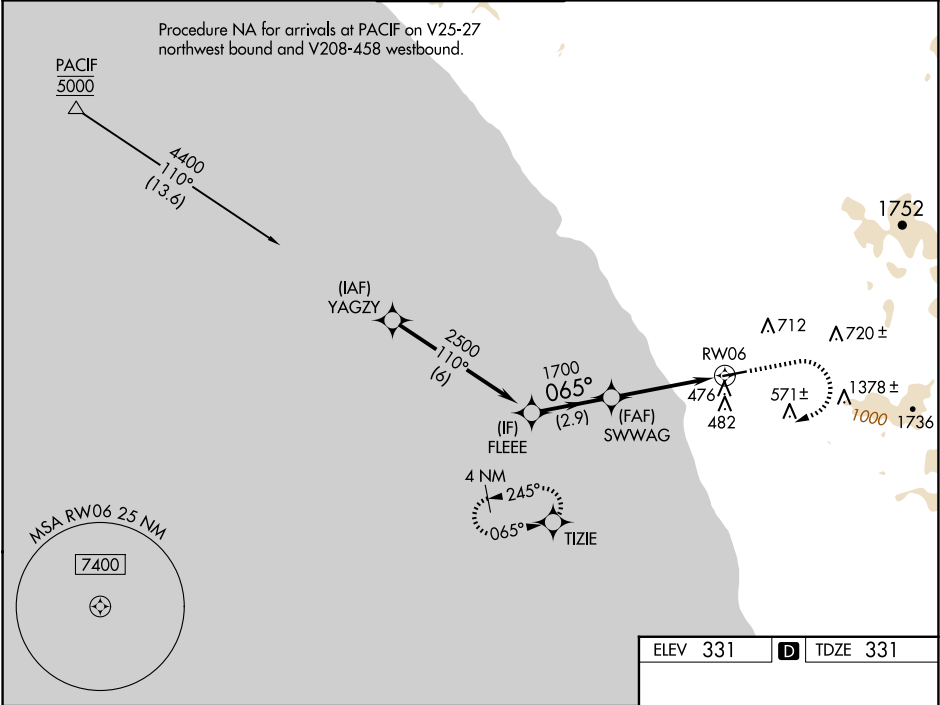


|  |                        |   |
|--|------------------------|---|
| WAAS<br>CH <b>40239</b><br><b>W06A</b> | APP CRS<br><b>065°</b> | Rwy Ldg<br>TDZE<br>Apt Elev<br><b>331</b><br><b>331</b> |
|--|------------------------|---|

RNAV (GPS) Y RWY 6  
MC CLELLAN-PALOMAR (CRQ)

|  |                                     |  |                         |                           |
|--|-------------------------------------|--|-------------------------|---------------------------|
| RNP APCH - GPS.  |                                     | MISSED APPROACH: Climb to 1000 then climbing right turn to 3000 direct TIZIE and hold, continue climb-in-hold to 3000. |                         |                           |
| For uncompensated Baro-VNAV systems, LNAV/VNAV NA below 5°C or above 54°C. |                                     |  |                         |                           |
| ATIS<br><b>120.15</b>  | SOCAL APP CON<br><b>127.3 323.0</b> | PALOMAR TOWER ★<br><b>118.6 (CTAF) 0 276.4</b>   | GND CON<br><b>121.8</b> | CLNC DEL<br><b>134.85</b> |



SW-3, 07 AUG 2025 to 04 SEP 2025

SW-3, 07 AUG 2025 to 04 SEP 2025